



The Industrial Choice.

**Model SCDD
Direct Drive**



**Model SCBD
Belt Driven**

SQUARE INLINE FANS

Direct Drive & Belt Driven

Model SCDD / SCBD

Square Inline Centrifugal Fans

General Information

Aerovent's SCDD direct drive and type SCBD belt driven square inline fans are specifically designed for duct applications handling relatively clean air, including supply, exhaust and return air systems. These fans offer high efficiency and quiet operation in a compact design that can be mounted in any position (horizontal, vertical or angular). Duct collars are provided for easy mounting without the need for square to round duct transitions. The units can be easily serviced through the side access panels without removing duct connections.

Square inline centrifugal units feature high efficient, non-overloading, backward inclined centrifugal wheels precisely matched to a spun venturi. All wheels are statically and dynamically balanced. Units are manufactured under strict quality assurance standards to insure cataloged performance and years of maintenance-free operation. Square inline fans are not intended for outdoor applications.

Capabilities

SCBD inline fans are available in 29 sizes, 080 through 402. SCDD inline fans are available in 10 sizes, 080 through 165.

Performance capabilities include a broad capacity range from 250 to 27,500 CFM and static pressure capabilities to 3.5 inches w.g.

Variable Speed Control

Variable speed control is available on SCDD models. The speed control option allows the fan to start on high speed for better start-up characteristics and allows adjustment of airflow for system balancing. The controller can be factory installed or shipped loose for field mounting. Motor must be ODP 115V.



Aerovent certifies that the SCDD and SCBD models shown herein are licensed to bear the AMCA Seal. The ratings shown are based on tests and procedures performed in accordance with AMCA Publication 211 and AMCA Publication 311 and comply with the requirements of the AMCA Certified Ratings Program.



All SCDD and SCBD models are UL/cUL 705 listed, for electrical, File No. E158680.



Model SCBD



Model SCDD

Construction Features

- Housing assembly features heavy-gauge galvanized steel construction.
- Removable side panels provide easy access for service and maintenance without the need to remove duct connections. Complete removal of the power assembly is also possible through side access panels.
- Side panels can provide a 90-degree side discharge. Requires optional side discharge accessory.
- Backward inclined non-overloading, all-aluminum wheel and hub statically and dynamically balanced to assure long life and quiet operation.
- Galvanized steel mounting brackets for easy mounting in horizontal or vertical position.
- Heavy-duty cast iron adjustable pulleys to permit speed variation (Model SCBD).
- All models are furnished with prelubricated cast iron pillow block bearings with zerk fittings, designed for an average life (L-50) of 500,000 hours or more at maximum cataloged operating speeds (Model SCBD).
- Mounted disconnect switch provided as standard for servicing the unit without the danger of an accidental start.

Removable Side Panels

Shown below are Models SCDD and SCBD with the side panels removed. This special feature provides easy access for service and maintenance without the need to remove duct connections. Complete removal of the power assembly is also possible through side access panels.



Accessories

Belt Guard

A formed galvanized steel guard is available to cover the drive assembly on Model SCBD.

Motor Cover

A formed galvanized steel cover is available on Model SCBD to completely cover the motor and drives. Motor cover serves as OSHA belt guard.

Vibration Isolators

Spring or neoprene type vibration isolators are available for ceiling suspended or floor mounted units.

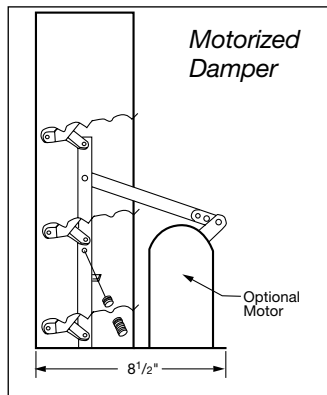
Extended Lubrication Lines

Exterior mounting zerk fittings are available with lines to the fan shaft bearings for relubrication from outside the unit.

Backdraft Dampers

Backdraft dampers, with automatic or motorized operation, feature felt-edged damper blades for quiet operation. Damper frames are constructed of 20-gauge galvanized steel and blades are constructed of 26-gauge aluminum.

Motorized dampers are recommended for low CFM applications to assure unrestricted airflow. Motorized dampers are available with 115, 208, 230, 460 or 575 volt service; 460 and 575 volt service requires a step-down transformer. See dimensional data for sizing.



Filter Box

A filter box containing 2 inch wire mesh, removable and washable filters is available for attachment to the fan inlet side. The filter box is constructed of galvanized steel, with duct collars for easy mounting and removable side panels for easy filter cleaning or replacement. Disposable paper filters are also available. For filter box pressure drops contact factory. See page 21 for dimensional data. One inch filters are available on either type.

Insulated Housing

A one-inch thick layer of fiberglass insulation on the interior of the fan housing is available to provide protection against condensation and to aid in noise reduction. Neoprene coated or foil face insulation is available.

Inlet/Outlet Guard

Inlet and outlet guards are available for all models. Guards mount inside the unit and do not interfere with the attachment of ductwork.

Side Discharge

Side discharge kits provide 1-way, 2-way or 3-way discharges. See page 4 for available configurations.

Special Coatings

Square inline centrifugal fans often require special coatings for protective and decorative purposes. Available coatings include anticondensate, air-dried enamel, air-dried epoxy, and Heresite (air-dried phenolic). Contact your Aerovent representative for more information on available coatings and colors.

Weatherproofing

Sealed motor cover and gasketed panels with rain lip. Suitable for outdoor use.

Side Discharge Option

Side discharge kits (including panels, mounting collars, and necessary hardware) are available to provide 1-way, 2-way, or 3-way discharges. This option provides exceptional adaptability for any installation, as well as avoiding the system effect of disrupted airflow when the ductwork has to take a 90-degree turn.

Configurations

Option	Figure	Configuration
Standard	A	Rear
1-Way	B	Left
	C	Right
	D	Left and Right
2-Way	E	Left and Rear
	F	Right and Rear
3-Way	G	Left, Right and Rear

NOTE: Performance will change depending on the position of the discharge. See correction factor table below. Percentages based on (inline) cataloged performance, but are not AMCA certified. Always check BHP when selecting motor HP and fan size.

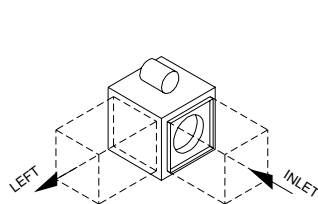


FIG. B

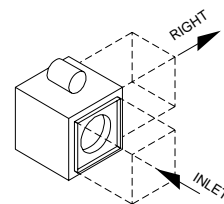


FIG. C

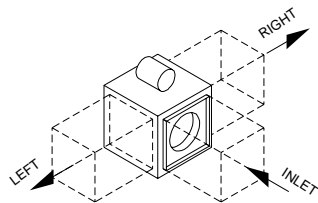


FIG. D

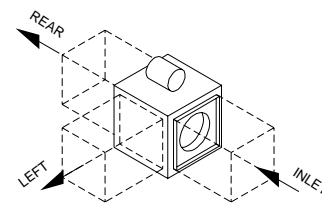


FIG. E

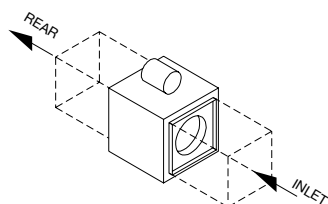


Fig. A

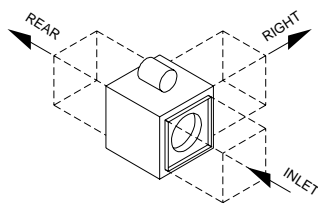


FIG. F

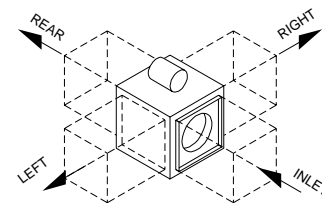


FIG. G

Performance Correction Factors

Discharge	0.50" SP		1.00" SP		1.50" SP		2.00" SP		Avg.	
	CFM	BHP	CFM	BHP	CFM	BHP	CFM	BHP	CFM	BHP
1-Way	110.7%	113.0%	114.0%	110.8%	115.8%	108.5%	120.0%	102.3%	115.1%	108.7%
2-Way	114.7%	106.5%	118.1%	109.7%	120.3%	112.4%	126.8%	114.0%	120.0%	110.7%
3-Way	113.2%	105.9%	117.4%	109.7%	121.6%	113.0%	127.1%	114.0%	119.8%	110.7%

NOTE: The performance correction factors shown above are not licensed to bear the AMCA Certified Ratings Seal.

Duct Openings

Model SCBD	Model SCDD	Left and Right Discharge			Rear Discharge/Inlet		
		Duct Collar		Duct Size Required	Duct Collar		Duct Size Required
		Width	Height		Width	Height	
080	080	11.88	11.88	12 x 12	11.88	11.88	12 x 12
090	090	11.88	11.88	12 x 12	11.88	11.88	12 x 12
100	100	13.88	13.88	14 x 14	13.88	13.88	14 x 14
120	120	15.88	15.88	16 x 16	15.88	15.88	16 x 16
135	135	17.88	17.88	18 x 18	17.88	17.88	18 x 18
150	150	19.88	19.88	20 x 20	19.88	19.88	20 x 20
165	165	22.88	22.88	23 x 23	22.88	22.88	23 x 23
180	—	23.88	23.88	24 x 24	23.88	23.88	24 x 24
210	—	27.88	27.88	28 x 28	27.88	27.88	28 x 28
225	—	25.88	28.88	26 x 29	29.88	29.88	30 x 30
245	—	27.88	31.88	28 x 32	32.88	32.88	33 x 33
270	—	29.88	33.88	30 x 34	35.88	35.88	36 x 36
300	—	29.88	37.88	30 x 38	39.88	39.88	40 x 40
330	—	31.88	39.88	32 x 40	43.88	43.88	44 x 44
365	—	32.88	41.88	33 x 42	45.88	45.88	46 x 46
402	—	34.88	46.88	35 x 47	51.88	51.88	52 x 52

NOTE: Damper size should be 1/8" less than duct size required, or same size as duct collar.

Performance Data – Direct Drive

SCDD – 60 Hz

MODEL SCDD	MOTOR HP	RPM	MAX. BHP	STATIC PRESSURE (INCHES W.G.)													
				0	0.125	0.25	0.375	0.50	0.625	0.75	1.00	1.25	1.50	1.75	2.00		
				CFM SONE													
080A	1/8	860	0.01	323 4.2	247 3.4												
	1/8	1160	0.03	436 7.4	382 6.3	321 6.1	232 5.5										
	1/8	1650	0.10	620 10.4	583 10.4	545 8.7	505 8.0	459 8.6	403 8.3	335 7.3							
090A	1/8	860	0.02	495 5.9	390 4.4												
	1/8	1160	0.05	668 9.8	592 8.2	510 7.9	401 6.4										
	1/8	1650	0.14	950 13.0	897 13.0	843 11.2	789 10.3	729 11.1	660 10.7	578 8.5							
100A	1/8	860	0.04	787 7.8	666 6.0	520 6.2											
	1/8	1160	0.11	1061 13.3	973 12.1	882 10.0	780 10.9	651 9.0									
	1/3	1750	0.36	1601 17.8	1543 17.8	1484 17.6	1424 15.9	1365 14.7	1303 14.8	1236 15.6	1083 14.9	877 11.7					
120A	1/8	860	0.07	1047 5.8	951 5.3	830 5.1	586 4.3										
	1/4	1160	0.18	1413 9.3	1344 9.3	1268 8.1	1183 7.7	1079 8.3	923 6.9								
	3/4	1750	0.63	2132 17.9	2087 17.9	2041 17.9	1993 17.7	1942 16.5	1889 15.5	1834 14.8	1709 15.6	1551 16.1	1288 14.2				
135AN	1/8	860	0.08	1041 6.9	941 6.2	819 5.5	670 5.2										
	1/4	1160	0.20	1404 11.4	1332 11.4	1254 9.6	1165 8.4	1070 9.1	962 9.1	823 7.9							
	3/4	1750	0.69	2118 17.8	2071 17.8	2024 17.8	1974 17.8	1922 16.9	1867 15.7	1808 15.4	1685 15.9	1554 16.6	1401 14.8	1203 14.6	899 14.6		
135A	1/4	860	0.13	1437 7.1	1331 6.7	1208 5.9	1041 6.1										
	1/2	1160	0.31	1938 11.2	1862 11.2	1780 10.7	1691 9.4	1591 9.4	1471 10.0	1306 8.9							
	1	1750*	1.07	2924 22	2875 22	2824 22	2771 22	2717 21	2660 20	2601 19.0	2476 18.3	2334 19.4	2161 19.6	1918 17.5			
150AN	1/4	860	0.13	1385 8.2	1277 7.9	1150 6.3	1005 6.9	810 5.9									
	1/2	1160	0.32	1868 13.7	1790 13.7	1707 12.1	1615 10.5	1513 10.1	1407 11.0	1288 11.0	940 9.5						
	1	1750*	1.11	2818 21	2767 21	2715 21	2662 21	2606 20	2549 19.6	2488 18.6	2359 18.0	2221 19.2	2077 19.7	1913 18.5	1713 17.2		
150A	1/4	860	0.20	1913 8.5	1798 8.5	1668 7.1	1513 7.5	1286 6.7									
	1/2	1160	0.50	2580 13.5	2497 13.5	2409 13.3	2315 11.9	2213 11.3	2099 11.4	1965 12.1	1514 10.0						
	1 1/2	1750*	1.72	3892 26	3838 26	3783 26	3726 26	3667 26	3607 25	3545 24	3414 22	3273 22	3116 22	2931 23	2699 22		
165AN	1/4	860	0.23	2094 7.7	1953 7.6	1805 6.9	1647 7.2	1472 7.3	1248 7.2								
	1/2	1160	0.56	2825 12.4	2721 12.4	2615 12.0	2506 11.4	2394 11.0	2277 11.2	2155 12.0	1877 11.2	1457 11.3					
	2	1750*	1.93	4261 22	4193 22	4124 22	4054 22	3984 21	3912 21	3840 21	3694 20	3543 20	3386 21	3223 22	3048 23		
165A	1/2	860	0.33	2898 10.1	2683 9.9	2499 8.9	2323 9.2	2069 9.4	1773 8.2								
	1	1160	0.81	3909 16.5	3744 16.5	3592 15.6	3452 14.7	3327 14.2	3199 14.8	3044 15.7	2640 13.7	2152 13.5					
	3	1750*	2.80	5898 30	5786 30	5678 30	5574 30	5473 29	5375 28	5281 27	5109 26	4945 26	4769 27	4552 28	4589 27		

* Designates motors that cannot be used with speed controller.

NOTES:

- Performance certified is for Installation Type A: Free inlet, free outlet.
- The sound ratings shown are loudness values in fan sones at 5 ft. (1.5m) in a hemispherical free field calculated per AMCA Standard 301.
- Performance ratings do not include the effects of appurtenances (accessories).
- Values shown are for Installation Type A: Free inlet, free outlet fan some values.

Performance Data – Belt Driven

SCBD 080A

Max. Motor Frame Size = 145T

HP	RPM	STATIC PRESSURE (INCHES W.G.)																								
		0.125		0.25		0.50		0.75		1.00		1.25		1.50		1.75		2.00		2.25		2.50		3.00		
		CFM	Sone	CFM	Sone	CFM	Sone	CFM	Sone	CFM	Sone	CFM	Sone	CFM	Sone	CFM	Sone	CFM	Sone	CFM	Sone	CFM	Sone	CFM	Sone	
1/4	850	241																								
		0.01	3.1																							
	1050	333		261																						
			0.03	4.6	0.03	4.7																				
	1250	419		363																						
			0.04	6.6	0.04	5.9																				
	1450	502		455		349																				
			0.06	9.0	0.07	7.3	0.07	7.5																		
	1650	584		542		457		344																		
			0.09	11.0	0.10	9.1	0.10	9.2	0.10	7.8																
1850	664		627		552		470		352																	
		0.13	11.8	0.14	11.0	0.14	9.9	0.14	10.7	0.13	9.1															
2050	744		710		643		574		493		376															
		0.18	13.9	0.18	12.8	0.19	11.2	0.19	12.2	0.19	11.7	0.18	10.6													
2250	823		792		730		669		604		525		416													
		0.24	15.6	0.24	15.1	0.25	13.0	0.26	13.0	0.26	14.2	0.26	13.2	0.24	12.3											
1/3	872		843		784		726		667		599		516		390											
		0.28	16.8	0.28	16.8	0.29	14.3	0.30	13.8	0.30	14.8	0.30	15.2	0.30	13.0	0.27	13.3									
	921		893		837		783		727		667		597		509											
2500		0.32	18.3	0.33	18.3	0.34	16.0	0.35	15.1	0.35	15.6	0.35	16.5	0.35	15.8	0.34	14.3									
	984		957		904		853		801		748		689		620		534									
1/2	2660		0.39	20	0.39	20	0.40	18.4	0.41	16.7	0.42	16.4	0.43	18.1	0.43	18.3	0.42	16.8	0.41	16.0						
		1062		1037		988		940		892		843		793		737		673		597						
3/4	2860		0.48	23	0.49	23	0.50	21	0.51	19.6	0.52	18.6	0.53	19.1	0.53	20	0.53	21	0.52	19.1	0.51	17.5				
		1139		1116		1070		1025		980		935		889		842		789		730		576				
1	3060		0.59	26	0.59	26	0.61	25	0.62	23	0.63	21	0.64	21	0.65	21	0.65	22	0.65	23	0.64	21	0.61	19.4		
		1217		1195		1152		1109		1067		1025		982		939		894		845		729		559		
3260		0.71	29	0.72	29	0.73	29	0.74	25	0.76	24	0.77	23	0.77	23	0.78	24	0.79	25	0.79	25	0.77	22	0.72	22	
		1281		1260		1218		1177		1137		1097		1057		1016		975		932		833		708		
3425		0.82	33	0.83	33	0.84	32	0.86	29	0.87	26	0.88	25	0.89	24	0.90	25	0.91	26	0.91	27	0.91	26	0.87	23	
		1344		1324		1285		1246		1207		1169		1131		1092		1053		1013		926		823		
3590		0.94	35	0.95	35	0.97	35	0.98	33	1.00	30	1.01	28	1.02	27	1.03	27	1.04	27	1.05	29	1.05	29	1.03	26	

NOTES:

1. Performance certified is for Installation Type A: Free inlet, free outlet.
2. Power rating (BHP) does not include transmission losses.
3. Performance ratings do not include the effects of appurtenances (accessories).
4. The sound ratings shown are loudness values in fan sones at 5 ft. (1.5m) in a hemispherical free field calculated per AMCA Standard 301.
5. Values shown are for Installation Type A: Free inlet, free outlet fan sone values.

Performance Data – Belt Driven

SCBD 090A

Max. Motor Frame Size = 145T

HP	RPM	STATIC PRESSURE (INCHES W.G.)																									
		0.125		0.25		0.50		0.75		1.00		1.25		1.50		1.75		2.00		2.25		2.75		3.25			
		CFM	Sone	CFM	Sone	CFM	Sone	CFM	Sone	CFM	Sone	CFM	Sone	CFM	Sone	CFM	Sone	CFM	Sone	CFM	Sone	CFM	Sone	CFM	Sone		
1/4	1450	752	697	562																							
		0.09	9.0	0.09	8.2	0.10	8.8																				
	1650	869	822	715	576																						
		0.13	11.1	0.13	10.6	0.14	10.1	0.14	10.9																		
	1850	984	944	854	748	608																					
1/3	2015	1079	1042	962	872	764	616																				
		0.23	14.8	0.23	14.8	0.25	13.5	0.26	13.1	0.26	14.4	0.25	12.7														
	2120	1139	1104	1029	946	851	734	505																			
		0.27	15.8	0.27	15.8	0.28	14.4	0.30	13.9	0.30	14.8	0.30	14.8	0.27	13.2												
1/2	2230	1201	1168	1099	1022	935	835	703																			
		0.31	16.8	0.31	16.8	0.33	15.9	0.34	14.7	0.35	15.5	0.35	16.2	0.35	14.1												
	2390	1292	1262	1197	1128	1052	967	868	736																		
3/4	2550	1382	1354	1295	1231	1163	1088	1004	908	781																	
		0.46	19.8	0.47	19.8	0.48	19.6	0.49	18.7	0.51	17.9	0.52	18.4	0.53	19.4	0.53	18.6	0.51	16.0								
	2735	1487	1460	1406	1348	1286	1220	1149	1069	979	866	646															
1	2920	1591	1566	1515	1462	1406	1347	1283	1215	1140	1056	956															
		0.69	25	0.69	25	0.71	25	0.73	24	0.74	23	0.76	22	0.78	22	0.79	24	0.79	24	0.79	23	0.78	21				
1	3060	1669	1646	1598	1547	1495	1440	1381	1319	1251	1178	1097	863														
		0.79	26	0.80	26	0.81	26	0.83	26	0.85	25	0.87	24	0.88	24	0.90	24	0.91	25	0.91	26	0.91	25	0.87	21		
1	3205	1750	1728	1682	1635	1585	1534	1480	1422	1361	1296	1224	1055														
		0.90	28	0.91	28	0.93	28	0.95	28	0.97	27	0.99	26	1.01	26	1.02	26	1.04	27	1.05	28	1.05	28	1.04	24		

SCBD 100A

Max. Motor Frame Size = 145T

HP	RPM	STATIC PRESSURE (INCHES W.G.)																								
		0.125		0.25		0.375		0.50		0.75		1.00		1.25		1.50		1.75		2.00		2.25		2.50		
		CFM	Sone	CFM	Sone	CFM	Sone	CFM	Sone	CFM	Sone	CFM	Sone	CFM	Sone	CFM	Sone	CFM	Sone	CFM	Sone	CFM	Sone	CFM	Sone	
1/4	1025	816	716	592																						
		0.07	6.8	0.07	6.2	0.07	6.9																			
	1275	1053	981	899	806																					
		0.13	9.9	0.13	9.1	0.14	8.7	0.14	9.5																	
	1465	1229	1169	1103	1030	859																				
1/3	1565	1321	1265	1205	1140	992	790																			
		0.23	13.7	0.24	13.7	0.25	12.8	0.25	12.2	0.26	13.1	0.26	12.7													
	1645	1394	1341	1285	1225	1090	924																			
		0.27	15.0	0.28	14.5	0.28	13.9	0.29	13.2	0.30	13.9	0.31	14.3													
1/2	1725	1467	1417	1364	1308	1184	1038	833																		
		0.31	16.0	0.32	16.0	0.33	15.4	0.33	14.5	0.35	14.4	0.35	15.6	0.34	14.4											
	1850	1580	1534	1485	1434	1324	1199	1049	818																	
1	1980	1697	1654	1610	1563	1463	1353	1229	1077	825																
		0.47	19.2	0.47	19.2	0.48	19.0	0.49	18.3	0.51	17.2	0.53	17.3	0.53	18.8	0.53	18.1	0.5	16.8							
3/4	2120	1823	1783	1742	1699	1609	1510	1403	1281	1133	894															
		0.57	21	0.58	21	0.59	20	0.60	20	0.62	19.2	0.64	18.6	0.65	19.5	0.66	20	0.65	19.1	0.61	17.9					
	2255	1944	1906	1868	1829	1746	1656	1560	1455	1336	1192	970														
1	2370	2046	2011	1975	1938	1860	1777	1689	1593	1489	1371	1226	999													
		0.79	24	0.80	24	0.81	24	0.83	24	0.85	23	0.87	22	0.89	22	0.91	22	0.92	23	0.92	22	0.91	20	0.85	19.3	
1	2480	2145	2111	2077	2041	1968	1891	1808	1720	1626	1522	1405	1259													
		0.91	25	0.92	25	0.93	25	0.94	25	0.96	24	0.99	23	1.01	23	1.03	23	1.04	24	1.05	25	1.05	24	1.03	21	

NOTES:

1. Performance certified is for Installation Type A: Free inlet, free outlet.
2. Power rating (BHP) does not include transmission losses.
3. Performance ratings do not include the effects of appurtenances (accessories).
4. The sound ratings shown are loudness values in fan sones at 5 ft. (1.5m) in a hemispherical free field calculated per AMCA Standard 301.
5. Values shown are for Installation Type A: Free inlet, free outlet fan sone values.

Performance Data – Belt Driven

SCBD 135A

Max. Motor Frame Size = 145T

HP	RPM	STATIC PRESSURE (INCHES W.G.)																							
		0.125		0.25		0.375		0.50		0.625		0.75		1.00		1.25		1.50		1.75		2.00		2.25	
		CFM	Sone	CFM	Sone	CFM	Sone	CFM	Sone	CFM	Sone	CFM	Sone	CFM	Sone	CFM	Sone	CFM	Sone	CFM	Sone	CFM	Sone	CFM	Sone
1/4	900	1386	8.0	1268	7.1	1120	7.7	894	6.1																
	1075	1696	11.0	1599	9.8	1500	9.4	1380	10.0	1217															
1/3	1130	1792	11.8	1700	10.8	1607	10.1	1503	10.3	1365	1192														
	1190	1897	12.6	1810	12.0	1721	10.9	1629	10.9	1515	1367	1192													
1/2	1280	2053	13.9	1973	13.4	1890	12.4	1807	12.0	1716	1602	1292													
	1370	2208	15.4	2133	15.4	2057	14.4	1980	13.3	1901	1811	1568													
3/4	1465	2370	17.0	2301	17.0	2231	16.0	2158	15.0	2086	2010	1818	1559												
	1565	2541	19.0	2477	19.0	2411	18.3	2344	17.2	2277	2208	2054	1843	1572											
1	1640	2669	20	2608	20	2545	20	2482	19.1	2417	2353	2215	2038	1813											
	1720	2805	22	2747	22	2687	22	2627	21	2566	2504	2378	2229	2034	1801										
1 1/2	1845	3017	25	2963	25	2908	25	2852	24	2795	2738	2623	2500	2350	2163	1946									
	1970	3228	27	3178	27	3127	27	3075	26	3022	2969	2862	2752	2632	2484	2305	2105								

SCBD 135AHP

Max. Motor Frame Size = 145T

HP	RPM	STATIC PRESSURE (INCHES W.G.)																							
		0.25		0.50		0.75		1.00		1.25		1.50		1.75		2.00		2.25		2.50		2.75		3.00	
		CFM	Sone	CFM	Sone	CFM	Sone	CFM	Sone	CFM	Sone	CFM	Sone	CFM	Sone	CFM	Sone	CFM	Sone	CFM	Sone	CFM	Sone	CFM	Sone
1/4	1050	1116	8.5	899	8.1																				
	1200	1321	11.4	1161	9.3	937																			
1/3	1275	1421	12.6	1276	10.1	1081	10.8	789	9.7																
	1350	1520	14.0	1387	11.5	1219	11.7	1007	11.0																
1/2	1450	1651	15.5	1529	13.2	1390	12.4	1206	11.6	966															
	1550	1780	17.2	1668	15.0	1546	13.6	1392	13.9	1212															
3/4	1655	1915	19.0	1812	17.4	1701	15.2	1573	14.2	1412	1237														
	1765	2055	21	1959	19.7	1858	17.6	1747	16.2	1613	1457	1283													
1	1855	2169	22	2079	21	1983	19.1	1882	18.0	1767	1625	1475	1286												
	1945	2282	24	2197	23	2107	21	2013	19.4	1910	1788	1646	1501	1294											
1 1/2	2085	2458	26	2379	26	2297	24	2211	22	2121	2021	1903	1771	1637	1470										
	2225	2633	29	2560	29	2484	27	2405	26	2323	2236	2139	2027	1903	1779	1639	1423								

NOTES:

1. Performance certified is for Installation Type A: Free inlet, free outlet.
2. Power rating (BHP) does not include transmission losses.
3. Performance ratings do not include the effects of appurtenances (accessories).
4. The sound ratings shown are loudness values in fan sones at 5 ft. (1.5m) in a hemispherical free field calculated per AMCA Standard 301.
5. Values shown are for Installation Type A: Free inlet, free outlet fan sone values.



Performance Data – Belt Driven

SCBD 150A

Max. Motor Frame Size = 184T

HP	RPM	STATIC PRESSURE (INCHES W.G.)																							
		0.125		0.25		0.375		0.50		0.625		0.75		1.00		1.25		1.50		1.75		2.00		2.25	
		CFM	Sone	CFM	Sone	CFM	Sone	CFM	Sone	CFM	Sone	CFM	Sone	CFM	Sone	CFM	Sone	CFM	Sone	CFM	Sone	CFM	Sone	CFM	Sone
1/4	825	1693		1552		1378		1115																	
		0.17	8.2	0.18	7.3	0.19	7.9	0.18	6.6																
1/3	920	1918		1793		1660		1481		1235															
		0.24	10.2	0.25	9.1	0.26	8.7	0.26	9.5	0.25	7.7														
1/2	1095	2326		2222		2116		2006		1874		1701													
		0.32	11.7	0.33	11.1	0.34	10.1	0.35	10.7	0.35	10.9	0.35	9.8												
3/4	1250	2682		2592		2500		2407		2311		2204		1913											
		0.58	16.2	0.60	15.8	0.61	14.8	0.63	14.0	0.64	13.6	0.65	14.3	0.65	14.7										
1	1400	3024		2944		2863		2780		2697		2613		2416		2147		1771							
		0.81	18.8	0.83	18.8	0.85	18.5	0.87	17.5	0.88	16.8	0.90	16.1	0.91	17.3	0.91	17.3	0.88	14.4						
1 1/2	1570	3409		3339		3267		3195		3120		3046		2894		2715		2483		2206					
		1.14	23	1.16	23	1.18	23	1.20	22	1.22	20	1.24	19.8	1.27	19.4	1.29	21	1.29	21	1.27	18.9				
2	1760	3837		3775		3712		3648		3583		3517		3385		3248		3094		2903		2676		2412	
		1.59	27	1.62	27	1.64	27	1.67	27	1.69	25	1.71	24	1.75	23	1.79	23	1.81	24	1.82	25	1.81	24	1.78	21
	1845	4028		3969		3909		3848		3787		3724		3598		3471		3334		3174		2979		2758	
		1.83	29	1.86	29	1.89	29	1.91	29	1.94	28	1.96	27	2.00	25	2.04	25	2.08	25	2.09	26	2.09	27	2.08	26

SCBD 150AHP

Max. Motor Frame Size = 184T

HP	RPM	STATIC PRESSURE (INCHES W.G.)																							
		0.50		0.75		1.00		1.25		1.50		1.75		2.00		2.25		2.50		2.75		3.00		3.25	
		CFM	Sone	CFM	Sone	CFM	Sone	CFM	Sone	CFM	Sone	CFM	Sone	CFM	Sone	CFM	Sone	CFM	Sone	CFM	Sone	CFM	Sone	CFM	Sone
1/3	950	1078																							
		0.20	8.3																						
1/2	1140	1505		1261																					
		0.34	10.4	0.34	10.8																				
3/4	1230	1682		1481		1226																			
		0.42	11.9	0.43	12.0	0.42	11.5																		
1	1320	1853		1684		1465		1175																	
		0.51	13.6	0.52	12.8	0.53	13.6	0.49	11.9																
1 1/2	1415	2029		1881		1698		1482																	
		0.62	15.9	0.64	14.4	0.65	14.8	0.65	14.5																
2	1510	2201		2067		1914		1723		1512															
		0.75	17.8	0.77	16.1	0.79	15.5	0.79	16.5	0.78	15.6														
1	1585	2335		2210		2073		1906		1714		1484													
		0.86	19.6	0.88	17.9	0.90	16.9	0.92	17.5	0.92	17.6	0.88	15.6												
1 1/2	1660	2468		2350		2224		2078		1902		1715		1444											
		0.98	21	1.01	19.0	1.03	18.0	1.05	18.1	1.05	19.0	1.05	17.8	0.97	16.6										
2	1780	2679		2570		2457		2333		2189		2023		1848		1615									
		1.20	24	1.23	22	1.26	20	1.28	19.4	1.29	20	1.30	21	1.29	19.9	1.23	18.4								
2	1900	2887		2787		2682		2573		2453		2313		2155		1992		1794							
		1.45	27	1.48	25	1.51	23	1.54	22	1.56	22	1.58	22	1.58	23	1.57	22	1.53	20						
2	1995	3050		2956		2858		2756		2648		2527		2387		2235		2079		1889					
		1.67	29	1.71	27	1.74	26	1.77	24	1.79	23	1.81	23	1.83	25	1.83	25	1.82	24	1.77	22				
	2090	3213		3123		3031		2935		2835		2728		2607		2469		2324		2175		1995		1721	
		1.91	31	1.95	29	1.99	28	2.02	26	2.05	25	2.07	25	2.09	25	2.10	26	2.10	26	2.09	26	2.04	24	1.86	24

NOTES:

1. Performance certified is for Installation Type A: Free inlet, free outlet.
2. Power rating (BHP) does not include transmission losses.
3. Performance ratings do not include the effects of appurtenances (accessories).
4. The sound ratings shown are loudness values in fan sones at 5 ft. (1.5m) in a hemispherical free field calculated per AMCA Standard 301.
5. Values shown are for Installation Type A: Free inlet, free outlet fan sone values.

Performance Data – Belt Driven

SCBD 245A

Max. Motor Frame Size = 215T

HP	RPM	STATIC PRESSURE (INCHES W.G.)																							
		0.125		0.25		0.375		0.50		0.625		0.75		1.00		1.25		1.50		1.75		2.00		2.25	
		CFM	Sone	CFM	Sone	CFM	Sone	CFM	Sone	CFM	Sone	CFM	Sone	CFM	Sone	CFM	Sone	CFM	Sone	CFM	Sone	CFM	Sone	CFM	Sone
1/2	475	4748	8.3	4292	7.3	3692																			
	505	5097	8.3	4686	7.6	4171	3523																		
3/4	540	5500	9.4	5129	8.0	4684	4122	3387																	
	575	5900	10.3	5561	9.4	5166	4690	4122																	
1	600	6183	11.5	5864	10.6	5498	5070	4545	3946																
	630	6522	12.3	6222	11.4	5886	5499	5040	4517																
1 1/2	675	7027	13.3	6752	12.7	6452	6113	5729	5275																
	725	7585	14.4	7334	13.9	7063	6765	6434	6062	5173															
2	760	7974	15.8	7736	15.8	7483	7208	6906	6572	5767	4638														
	795	8362	16.6	8136	16.2	7898	7642	7364	7059	6345	5506														
3	850	8969	17.1	8761	17.1	8542	8310	8062	7795	7191	6453	5615													
	910	9630	18.3	9437	18.3	9236	9025	8803	8566	8042	7429	6712	5866												
5	995	10563	19.8	10389	19.8	10208	10020	9825	9620	9177	8680	8109	7454	6764											
	1080	11494	21	11334	21	11170	11000	10825	10644	10259	9835	9368	8841	8244	7629										
7 1/2	1160	12367	25	12220	25	12068	11913	11753	11589	11244	10871	10466	10026	9536	8986										
	1235	13185	28	13047	28	12906	12762	12614	12462	12147	11812	11451	11063	10646	10186										

SCBD 245AHP

Max. Motor Frame Size = 215T

HP	RPM	STATIC PRESSURE (INCHES W.G.)																							
		0.75		1.00		1.25		1.50		1.75		2.00		2.25		2.50		2.75		3.00		3.25		3.50	
		CFM	Sone	CFM	Sone	CFM	Sone	CFM	Sone	CFM	Sone	CFM	Sone	CFM	Sone	CFM	Sone	CFM	Sone	CFM	Sone	CFM	Sone	CFM	Sone
1	650	3332																							
	730	4232	9.8	3570																					
1 1/2	780	4731	12.0	4208	10.9	3435																			
	835	5257	12.7	4806	13.1	4248	3404																		
2	875	5627	13.3	5210	14.6	4739	4092																		
	915	5989	14.3	5602	15.4	5179	4658	3927																	
3	980	6566	15.2	6218	16.0	5842	5432	4920	4231																
	1050	7176	17.2	6857	17.4	6523	6165	5773	5292	4667															
5	1150	8030	19.8	7743	18.9	7450	7143	6818	6472	6075	5585	4976													
	1245	8828	24	8566	22	8300	8027	7743	7443	7131	6788	6386	5901	5317											
7 1/2	1335	9575	27	9332	26	9086	8837	8581	8315	8038	7750	7443	7100	6698	6226										
	1425	10314	30	10089	30	9860	9628	9394	9154	8905	8646	8380	8102	7801	7462										

NOTES:

1. Performance certified is for Installation Type A: Free inlet, free outlet.
2. Power rating (BHP) does not include transmission losses.
3. Performance ratings do not include the effects of appurtenances (accessories).
4. The sound ratings shown are loudness values in fan sones at 5 ft. (1.5m) in a hemispherical free field calculated per AMCA Standard 301.
5. Values shown are for Installation Type A: Free inlet, free outlet fan sone values.

Performance Data – Belt Driven

SCBD 300A

Max. Motor Frame Size = 215T

HP	RPM	STATIC PRESSURE (INCHES W.G.)																							
		0.125		0.25		0.375		0.50		0.625		0.75		1.00		1.25		1.50		1.75		2.00		2.25	
		CFM	Sone	CFM	Sone	CFM	Sone	CFM	Sone	CFM	Sone	CFM	Sone	CFM	Sone	CFM	Sone	CFM	Sone	CFM	Sone	CFM	Sone	CFM	Sone
1	400	7531	6837	5958	4778																				
	450	0.68 12.9	0.72 10.2	0.74 9.8	0.70 7.3																				
1 1/2	480	8610	8054	7336	6527	5478																			
	515	0.96 14.9	1.01 14.3	1.04 11.4	1.05 11.8	1.01 9.0																			
2	540	9248	8747	8121	7397	6570																			
	565	1.15 16.8	1.21 16.8	1.25 13.4	1.27 13.2	1.26 12.7																			
3	605	9988	9535	8999	8348	7651	6839																		
	645	1.42 17.5	1.48 17.5	1.53 15.9	1.56 14.2	1.57 14.4	1.55 13.4																		
5	710	10513	10088	9602	9007	8363	7650																		
	770	1.62 18.5	1.69 18.5	1.75 18.0	1.79 15.2	1.81 15.3	1.80 15.5																		
7 1/2	825	11035	10636	10188	9651	9045	8406	6721																	
	880	1.85 19.2	1.93 19.2	1.99 19.3	2.04 16.8	2.07 15.7	2.08 16.6	1.98 12.8																	
1	390	11869	11502	11101	10642	10104	9532	8240																	
	515	2.26 21	2.34 21	2.42 21	2.48 20	2.52 18.2	2.55 17.7	2.53 17.3																	
1 1/2	550	12698	12360	11994	11592	11126	10602	9488	8112																
	590	2.73 23	2.82 23	2.90 23	2.97 23	3.03 20	3.07 19.6	3.09 20	3.01 17.4																
2	620	14040	13739	13418	13074	12700	12273	11316	10274	9019															
	650	3.62 26	3.72 26	3.81 26	3.89 26	3.97 26	4.03 24	4.11 23	4.11 24	4.03 20															
3	700	15274	14999	14711	14406	14081	13729	12903	12002	11016	9858														
	745	4.60 28	4.71 28	4.81 28	4.90 28	4.99 28	5.07 28	5.19 25	5.25 25	5.24 27	5.15 24														
5	810	16402	16148	15883	15606	15314	15005	14300	13484	12632	11690	10607													
	880	5.64 31	5.76 31	5.87 31	5.97 31	6.07 31	6.16 31	6.32 30	6.42 28	6.47 30	6.44 29	6.34 26													
7 1/2	945	17527	17291	17046	16791	16525	16247	15636	14919	14139	13330	12435	11429												
	1010	6.83 34	6.95 34	7.07 34	7.19 34	7.30 34	7.40 34	7.59 32	7.73 32	7.82 31	7.85 33	7.81 33	7.71 30												

SCBD 300AHP

Max. Motor Frame Size = 215T

HP	RPM	STATIC PRESSURE (INCHES W.G.)																							
		0.50		0.75		1.00		1.25		1.50		1.75		2.00		2.25		2.50		2.75		3.00		3.25	
		CFM	Sone	CFM	Sone	CFM	Sone	CFM	Sone	CFM	Sone	CFM	Sone	CFM	Sone	CFM	Sone	CFM	Sone	CFM	Sone	CFM	Sone	CFM	Sone
1	390	2715																							
	515	0.40 5.6																							
1 1/2	550	6049	4817																						
	590	1.02 9.6	1.02 8.8																						
2	620	6697	5656																						
	650	1.24 10.5	1.26 10.3																						
3	700	7396	6568	5439																					
	745	1.52 12.1	1.55 12.5	1.54 11.2																					
5	810	7905	7196	6180	4525																				
	880	1.75 13.6	1.79 13.9	1.81 12.0	1.63 12.3																				
7 1/2	945	8407	7773	6876	5807																				
	1010	2.00 15.4	2.05 14.1	2.09 14.4	2.04 13.6																				
1	390	9233	8668	7984	7069	5958																			
	515	2.47 18.2	2.54 15.7	2.59 16.7	2.60 15.1	2.51 15.2																			
1 1/2	550	9968	9440	8872	8107	7228	5967																		
	590	2.95 21	3.04 17.5	3.09 17.6	3.14 18.0	3.12 16.2	2.96 16.8																		
2	620	11018	10527	10039	9480	8742	7935	6942																	
	650	3.73 23	3.87 21	3.94 19.4	3.99 20	4.04 20	4.02 18.6	3.89 19.5																	
3	700	12133	11679	11233	10774	10241	9558	8815	8022	6584															
	745	4.71 25	4.89 25	5.00 23	5.06 22	5.12 23	5.17 23	5.17 22	5.08 22	4.73 22															
5	810	13157	12737	12316	11901	11464	10951	10314	9620	8917	7959														
	880	5.77 28	5.98 28	6.13 26	6.22 25	6.28 25	6.35 26	6.40 26	6.41 24	6.34 24	6.15 25														
7 1/2	945	14173	13782	13386	12997	12605	12188	11702	11112	10461	9818	9087	7869												
	1010	6.97 30	7.21 30	7.40 30	7.53 27	7.61 27	7.68 27	7.75 28	7.81 28	7.83 28	7.78 26	7.66 26	7.28 27												

NOTES:

1. Performance certified is for Installation Type A: Free inlet, free outlet.
2. Power rating (BHP) does not include transmission losses.
3. Performance ratings do not include the effects of appurtenances (accessories).
4. The sound ratings shown are loudness values in fan sones at 5 ft. (1.5m) in a hemispherical free field calculated per AMCA Standard 301.
5. Values shown are for Installation Type A: Free inlet, free outlet fan sone values.



Performance Data – Belt Driven

SCBD 330A

Max. Motor Frame Size = 256T

HP	RPM	STATIC PRESSURE (INCHES W.G.)																								
		0.125		0.25		0.375		0.50		0.625		0.75		1.00		1.25		1.50		1.75		2.00		2.25		
		CFM	Sone	CFM	Sone	CFM	Sone	CFM	Sone	CFM	Sone	CFM	Sone	CFM	Sone	CFM	Sone	CFM	Sone	CFM	Sone	CFM	Sone	CFM	Sone	
1	310	7663	8.7	6517	6.7	4805	5.4																			
	380	9752	14.0	8983	12.2	7994	10.7	6823	9.9																	
1 1/2	405	10479	15.6	9795	14.9	8908	12.3	7908	11.9	6582	9.4															
	435	11343	17.6	10732	17.6	9970	15.7	9088	14.8	8082	13.3															
2	455	11916	18.7	11343	18.7	10654	17.9	9829	17.6	8932	15.1	7858	14.8													
	475	12485	19.3	11946	19.3	11318	18.7	10550	18.7	9727	17.6	8787	17.6													
3	510	13477	21	12987	21	12438	20.3	11779	20.3	11036	18.7	8162	18.7													
	545	14463	22	14013	22	13519	22	12954	21	12290	20.3	9992	20.3													
5	600	16005	25	15606	25	15176	25	14708	25	14175	24	13569	24	12272	23	10750	23									
	650	17401	28	17037	28	16652	28	16240	28	15792	26	15286	26	14137	26	12898	25	11434	25							
7 1/2	700	18792	32	18458	32	18108	32	17737	32	17344	30	16918	30	15920	30	14826	28	13637	28	12250	25					
	745	20040	34	19729	34	19405	34	19065	34	18707	34	18329	34	17465	34	16464	31	15420	31	14263	27	12932	27			
10	780	21010	35	20714	35	20407	35	20088	35	19753	35	19401	35	18623	35	17707	33	16728	33	15697	30	14538	30	13186	28	
	820	22116	38	21837	38	21547	38	21247	38	20935	38	20610	38	19907	38	19089	36	18175	36	17235	32	16226	32	15099	30	

SCBD 330AHP

Max. Motor Frame Size = 256T

HP	RPM	STATIC PRESSURE (INCHES W.G.)																								
		0.75		1.00		1.25		1.50		1.75		2.00		2.25		2.50		2.75		3.00		3.25		3.50		
		CFM	Sone	CFM	Sone	CFM	Sone	CFM	Sone	CFM	Sone	CFM	Sone	CFM	Sone	CFM	Sone	CFM	Sone	CFM	Sone	CFM	Sone	CFM	Sone	
1 1/2	440	4716	8.4																							
	500	7005	10.7	4831	10.3																					
2	525	7782	12.4	6329	11.2																					
	550	8512	13.3	7221	11.9																					
3	590	9567	14.6	8485	13.8	7198	13.8																			
	630	10536	16.4	9686	16.9	8557	15.6	7137	15.6																	
5	690	11923	19.5	11264	18.7	10413	17.8	9369	17.8	8178	17.8															
	745	13162	23	12577	21	11928	21	11082	21	10111	20	9053	20													
7 1/2	800	14385	27	13842	24	13285	23	12645	23	11827	22	10922	22	9976	22	8380	23									
	855	15596	29	15081	27	14573	26	14039	26	13413	27	12637	27	11787	25	10930	25	9770	25							
10	900	16576	31	16084	31	15602	28	15113	28	14583	29	13953	29	13193	27	12386	27	11574	27	10550	26	8575	26			
	940	17440	33	16970	33	16504	30	16043	30	15562	30	15027	30	14386	30	13638	29	12867	29	12088	28	11130	28	9424	29	

NOTES:

- 1. Performance certified is for Installation Type A: Free inlet, free outlet.
- 2. Power rating (BHP) does not include transmission losses.
- 3. Performance ratings do not include the effects of appurtenances (accessories).
- 4. The sound ratings shown are loudness values in fan sones at 5 ft. (1.5m) in a hemispherical free field calculated per AMCA Standard 301.
- 5. Values shown are for Installation Type A: Free inlet, free outlet fan sone values.

Performance Data – Belt Driven

SCBD 402A

Max. Motor Frame Size = 256T

HP	RPM	STATIC PRESSURE (INCHES W.G.)																							
		0.125		0.25		0.375		0.50		0.625		0.75		0.875		1.00		1.125		1.25		1.50		1.75	
		CFM	Sone	CFM	Sone	CFM	Sone	CFM	Sone	CFM	Sone	CFM	Sone	CFM	Sone	CFM	Sone	CFM	Sone	CFM	Sone	CFM	Sone	CFM	Sone
1 1/2	290	12803	8.6	11551	7.5	9898	8.1																		
	310	13837	10.3	12708	8.9	11321	8.2	9460																	
2	325	14605	11.1	13550	10.1	12305	10.2	10677																	
	340	15368	12.4	14377	11.4	13238	11.5	11810	9946																
3	365	16630	14.5	15729	13.5	14722	13.4	13542	12064																
	390	17882	16.1	17054	15.8	16146	14.7	15127	13911	12447															
5	430	19870	19.1	19136	18.4	18347	17.9	17491	16540	15433	14130	12574													
	465	21599	22	20929	22	20220	20	19462	18644	17742	16707	15514	14190												
7 1/2	500	23319	24	22703	24	22057	23	21374	20649	19871	19021	18061	16972	15788											
	535	25032	27	24462	27	23867	27	23245	22591	21900	21163	20365	19476	18483	16212										
10	555	26009	28	25462	28	24893	28	24300	23679	23028	22340	21604	20804	19915	17876										
	585	27471	30	26955	30	26421	30	25867	25290	24689	24060	23396	22690	21928	20169	18133									

SCBD 402AHP

Max. Motor Frame Size = 256T

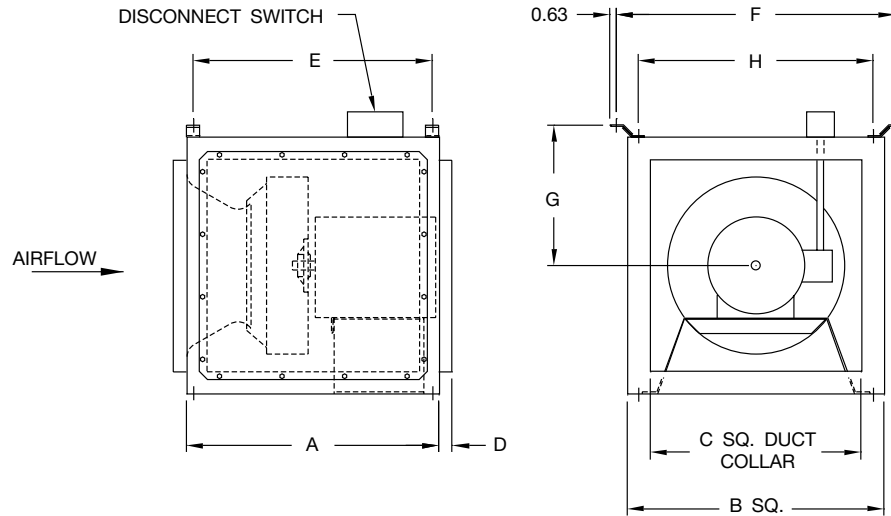
HP	RPM	STATIC PRESSURE (INCHES W.G.)																							
		0.50		0.75		1.00		1.25		1.50		1.75		2.00		2.25		2.50		2.75		3.00		3.25	
		CFM	Sone	CFM	Sone	CFM	Sone	CFM	Sone	CFM	Sone	CFM	Sone	CFM	Sone	CFM	Sone	CFM	Sone	CFM	Sone	CFM	Sone	CFM	Sone
1 1/2	300	6115	6.6																						
	355	9151	9.6																						
2	370	9886	10.2	7706	10.7																				
	390	10821	10.8	8929	12.0																				
3	420	12135	12.2	10463	13.2	8217	13.4																		
	445	13174	13.2	11713	14.1	10021	14.3																		
5	490	14984	15.7	13808	15.3	12337	16.3	10775																	
	530	16559	18.7	15516	17.1	14303	17.7	12888	11382																
7 1/2	570	18119	22	17148	19.2	16129	19.1	14901	13583	12127															
	605	19474	24	18544	22	17626	22	16575	15355	14125	12645														
10	640	20817	24	19924	24	19066	24	18152	17082	15903	14747	13278													
	670	21960	30	21097	27	20275	27	19437	18492	17412	16282	15169	13598												
15	715	23663	35	22847	31	22062	28	21294	20488	19572	18551	17490	16459	15234	12566										
	765	25541	40	24774	36	24023	34	23303	22582	21815	20953	20004	19011	18045	17034	15602									

NOTES:

1. Performance certified is for Installation Type A: Free inlet, free outlet.
2. Power rating (BHP) does not include transmission losses.
3. Performance ratings do not include the effects of appurtenances (accessories).
4. The sound ratings shown are loudness values in fan sones at 5 ft. (1.5m) in a hemispherical free field calculated per AMCA Standard 301.
5. Values shown are for Installation Type A: Free inlet, free outlet fan sone values.

Dimensional Data

Direct Drive



MODEL SCDD	A	B	C	D	E	F	G	H	DAMPER SIZE	AVG. SHIP WT. (LBS.)	SIDE DISCHARGE SIZE
080A	19.00	15.33	11.88	1.00	16.50	19.50	8.63	13.56	12.00 x 12.00	93	11.88 x 11.88
090A	19.00	15.33	11.88	1.00	16.50	19.50	8.63	13.56	12.00 x 12.00	96	11.88 x 11.88
100A	20.50	17.81	13.88	1.00	19.00	21.06	10.38	16.00	14.00 x 14.00	106	13.88 x 13.88
120A	21.50	19.38	15.88	1.00	20.00	22.06	11.13	17.00	16.00 x 16.00	127	15.88 x 15.88
135A/135AN	23.00	21.56	17.88	1.00	21.50	24.25	12.19	19.16	18.00 x 18.00	132	17.88 x 17.88
150A/150AN	24.00	23.82	19.88	1.00	22.50	26.38	13.29	21.31	20.00 x 20.00	157	19.88 x 19.88
165A/165AN	26.00	26.50	22.88	1.00	24.50	29.06	14.64	24.00	23.00 x 23.00	167	22.88 x 22.88

Notes:

1. All figures are in inches unless noted otherwise.
2. Average ship weight is for fan and motor assembly.
3. Dimensions are not to be used for construction.

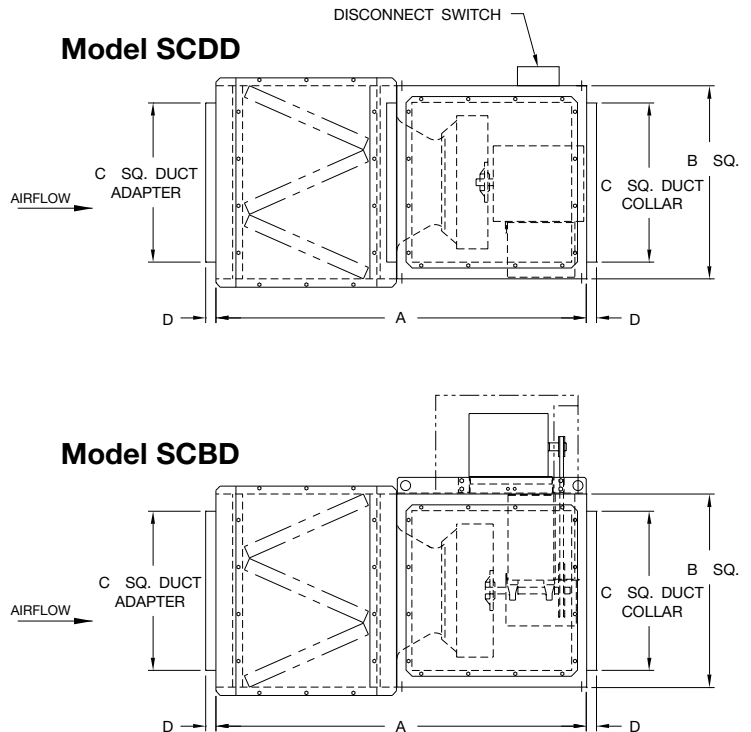
D-4210

Filter Box Assembly

SIZE	A	B	C	D
080A	47.38	15.33	11.88	1.00
090A	47.38	15.33	11.88	1.00
100A	47.25	17.81	13.88	1.00
120A/120AHP	52.88	19.38	15.88	1.00
135A/135AHP	55.00	21.56	17.88	1.00
150A/150AHP	56.00	23.82	19.88	1.00
165A/165AHP	54.00	26.50	22.88	1.00
180A/180AHP	55.00	29.00	23.88	1.50
210A/210AHP	63.00	32.34	27.88	1.50
225A/225AHP	68.00	34.00	29.88	1.50
245A/245AHP	65.50	37.50	32.88	1.50
270A/270AHP	72.00	40.13	35.88	1.50
300A/300AHP	75.50	44.13	39.88	1.50
330A/330AHP	80.50	48.81	43.88	1.50
365A/365AHP	79.50	50.13	45.88	1.50
402A/402AHP	88.00	55.25	51.88	1.50

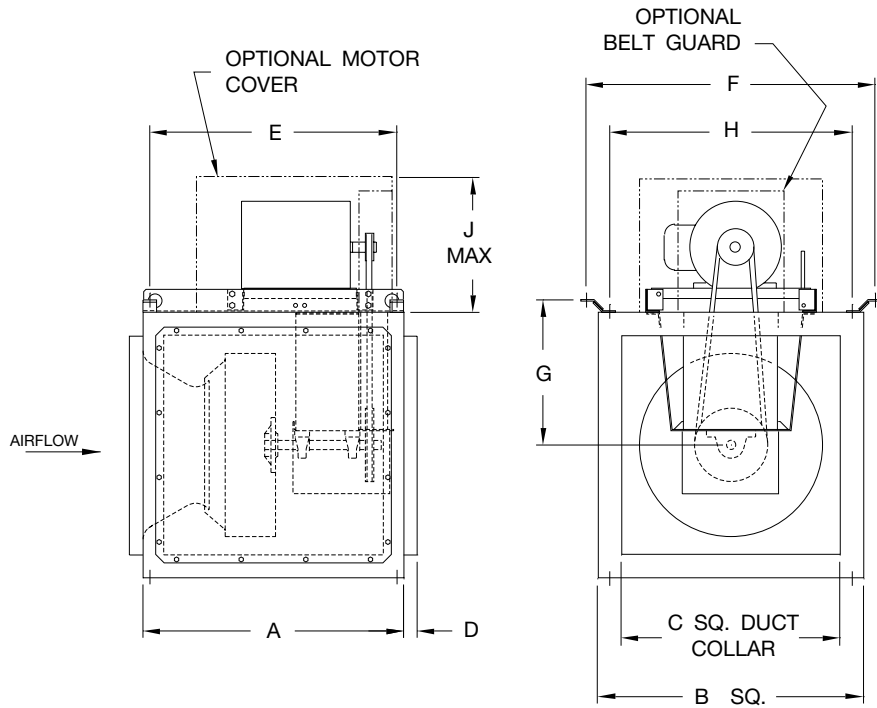
Notes:

1. All figures are in inches unless noted otherwise.
2. Filter box option is shipped separately for field installation.
3. For filter box information, see page 3.



Dimensional Data

Belt Drive



MODEL SCBD	A	B	C	D	E	F	G	H	J	DAMPER SIZE	AVG. SHIP WT. (LBS.)	SIDE DISCHARGE SIZE
080A	19.00	15.33	11.88	1.00	16.50	19.50	8.63	13.56	12.00	12.00 x 12.00	93	11.88 x 11.88
090A	19.00	15.33	11.88	1.00	16.50	19.50	8.63	13.56	12.00	12.00 x 12.00	96	11.88 x 11.88
100A	20.50	17.81	13.88	1.00	19.00	21.06	10.38	16.00	12.00	14.00 x 14.00	106	13.88 x 13.88
120A/120AHP	21.50	19.38	15.88	1.00	20.00	22.06	11.13	17.00	12.00	16.00 x 16.00	127	15.88 x 15.88
135A/135AHP	23.00	21.56	17.88	1.00	21.50	24.25	12.19	19.16	12.75	18.00 x 18.00	132	17.88 x 17.88
150A/150AHP	24.00	23.82	19.88	1.00	22.50	26.38	13.29	21.31	12.75	20.00 x 20.00	157	19.88 x 19.88
165A/165AHP	26.00	26.50	22.88	1.00	24.50	29.06	14.64	24.00	14.56	23.00 x 23.00	167	22.88 x 22.88
180A/180AHP	28.50	29.00	23.88	1.50	27.00	31.56	15.89	26.50	16.25	24.00 x 24.00	193	23.88 x 23.88
210A/210AHP	32.00	32.34	27.88	1.50	30.50	35.06	17.54	30.00	16.25	28.00 x 28.00	223	27.88 x 27.88
225A/225AHP	34.00	34.00	29.88	1.50	32.50	36.89	18.45	31.81	18.50	30.00 x 30.00	287	25.88 x 28.88
245A/245AHP	36.50	37.50	32.88	1.50	35.00	40.38	20.20	35.31	18.50	33.00 x 33.00	352	27.88 x 31.88
270A/270AHP	39.00	40.13	35.88	1.50	37.50	43.00	21.45	37.88	18.50	36.00 x 36.00	394	29.88 x 33.88
300A/300AHP	41.50	44.13	39.88	1.50	39.50	46.95	23.45	41.88	20.00	40.00 x 40.00	442	29.88 x 37.88
330A/330AHP	45.50	48.81	43.88	1.50	43.50	51.63	25.78	46.56	20.00	44.00 x 44.00	554	31.88 x 39.88
365A/365AHP	48.50	50.13	45.88	1.50	46.50	52.94	26.44	47.88	20.00	46.00 x 46.00	665	32.88 x 41.88
402A/402AHP	52.00	55.25	51.88	1.50	50.00	58.19	29.09	53.13	20.00	52.00 x 52.00	743	34.88 x 46.88

Notes:

1. All figures are in inches unless noted otherwise.
2. Average ship weight is for fan and motor assembly.
3. Dimensions are not to be used for construction.

D-4205

Typical Specifications

Supply or exhaust fans shall be of the direct drive model SCDD or the belt driven model SCBD centrifugal square inline type, as manufactured by Aerovent, Minneapolis, Minnesota.

PERFORMANCE — Fans shall be tested in accordance with AMCA 210 and AMCA 300 test codes for air moving devices and shall be guaranteed by the manufacturer to deliver rated published performance levels. Fans shall be licensed to bear the AMCA certified ratings seal for both sound and air. Fans shall be cULus 705 listed for electrical.

CONSTRUCTION — Unit exterior shall be constructed of heavy gauge galvanized steel. The fan housing shall be square in shape and readily attachable to building ductwork. Unit side panels shall be removable for easy access for maintenance and service. The power assembly shall be removable as a complete module through the side access panel. Fan housings shall have universal mounting brackets to accommodate horizontal or vertical installations. Fans shall bear a permanently attached nameplate displaying model and serial number of the unit for future identification.

WHEEL — Fan wheels shall be of the non-overloading centrifugal backward inclined type, constructed of aluminum and containing a matching inlet venturi for optimum unit performance. Wheels shall be statically and dynamically balanced.

SHAFT (SCBD Only) — Fan shafts shall be precision ground and polished. Shafts shall have a first critical speed of at least 125% of the fan's maximum operating speed.

BEARINGS (SCBD Only) — Bearings shall be of the one-piece, pillow block type with relubricable zerk fittings. Bearings shall be designed for air handling service with a minimum L-10 life in excess of 100,000 hours; L-50 500,000 hours at the maximum cataloged operating speed. Bearing mounting plate shall have self-aligning tabs for exact locating and alignment of bearings.

DRIVE (SCBD Only) — Drives shall be sized for a minimum of 150% of driven horsepower. Machined, cast iron motor sheaves shall be adjustable for final system balancing. The belt and pillow block ball bearings shall be protected from the airstream by an enclosure.

MOTOR — Motors shall be of the heavy-duty ball bearing type, closely matched to the fan load. A disconnect switch shall be factory installed and wired to the fan motor as standard. Motor shall be mounted on the outside of the unit, isolated from the airstream. All motors shall be UL recognized.

ACCESSORIES — When specified, accessories such as backdraft damper, belt guard, motor cover, insulated housing, vibration isolators, side discharge, remote lubrication lines, firestat, inlet and outlet guards, special coatings, and filter box option shall be provided by Aerovent to maintain one source responsibility.

FACTORY RUN TEST — All fans prior to shipment shall be completely assembled and test run as a unit at operating speed or maximum RPM allowed for the particular construction type. Each wheel shall be statically and dynamically balanced in accordance with ANSI/AMCA 204-96 "Balance Quality and Vibration Levels for Fans" to Fan Application Category BV-3, Balance Quality Grade G6.3. Balance readings shall be taken by electronic type equipment in the axial, vertical, and horizontal directions on each of the bearings. Records shall be maintained and a written copy shall be available upon request.

GUARANTEE — The manufacturer shall guarantee the workmanship and materials for its SCDD and SCBD Square Inline Fans for at least one (1) year from startup or eighteen (18) months from ship date.



©2007 Twin City Fan Companies, Ltd., Aerovent. All rights reserved throughout the world.

Bulletin illustrations cover the general appearance of Aerovent products at the time of publication and we reserve the right to make changes in design and construction at any time without notice.

**PROPELLER FANS | TUBEAXIAL & VANEAXIAL FANS | CENTRIFUGAL FANS & BLOWERS | ROOF VENTILATORS
INDUSTRIAL AIR HANDLERS | AIR MAKE-UP | FIBERGLASS FANS | CUSTOM FANS**



AEROVENT
A Twin City Fan Company

Aerovent

WWW.AEROVENT.COM

5959 Trenton Lane N | Minneapolis, MN 55442 | Phone: 763-551-7500 | Fax: 763-551-7501