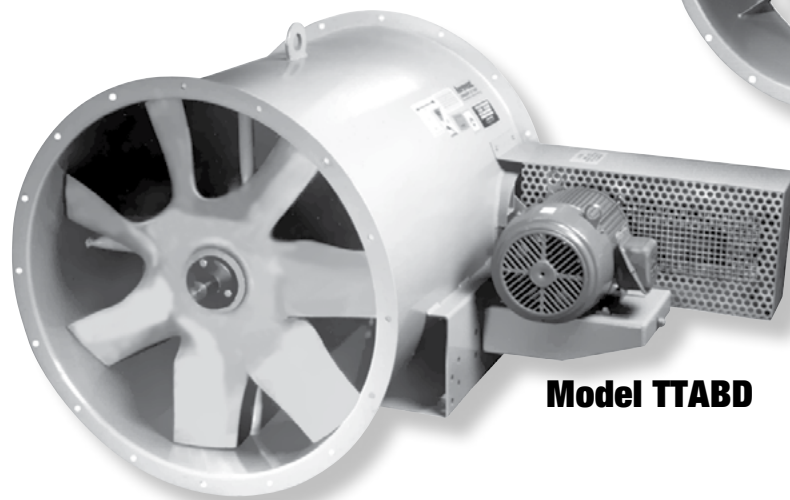




**The Industrial Choice.**

**Vane Section  
For Model VTBD**



**Model TTABD**

## **TUBEAXIAL & VANEAXIAL FANS**

**Type "T" Belt Driven  
Model TTABD / VTBD**

# Model TTABD/VTBD Tubeaxial/Vaneaxial Fans

Aerovent's Model TTABD tubeaxial fan is a medium pressure tubeaxial fan. It is convertible to a higher pressure vaneaxial, Model VTBD, by attaching a vane section to the discharge.

## Typical Applications

- In-duct space ventilation supply or exhaust
- Roof mounted ventilation
- Industrial fume exhaust
- Spray booth exhaust
- High temperature process ventilation

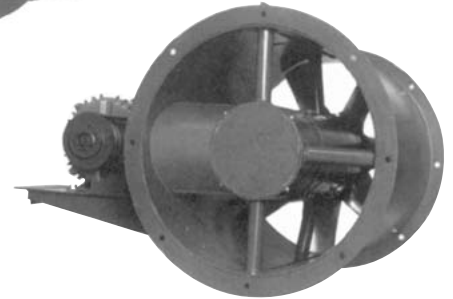
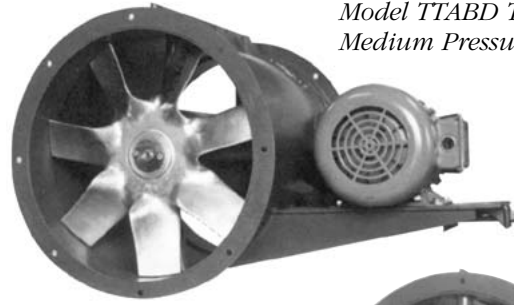
## Model TTABD – Arrangement 9 Belt Driven Tubeaxial

- Available in twelve sizes from 12" to 60" in diameter
- Capacity from 2000 to 83,000 CFM and pressures to 3" w.g.
- Optional high temperature construction to 600°F

## Model VTBD – Arrangement 9 Belt Driven Vaneaxial

- Available in twelve sizes from 12" to 60" in diameter
- Capacity from 2000 to 81,000 CFM and pressures to 4.5" w.g.
- Optional high temperature construction to 600°F

*Model TTABD Tubeaxial  
Medium Pressure*



*Model VTBD Vaneaxial  
Higher Pressure*

## Contents

|                                  |     |
|----------------------------------|-----|
| Construction Features . . . . .  | 2-3 |
| Accessories . . . . .            | 4-5 |
| Mounting Arrangements            |     |
| Tubeaxial . . . . .              | 6   |
| Vaneaxial . . . . .              | 7   |
| Optional Construction . . . . .  | 8   |
| Performance Data                 |     |
| Tubeaxial . . . . .              | 9   |
| Vaneaxial . . . . .              | 12  |
| Dimensional Data . . . . .       | 17  |
| Typical Specifications . . . . . | 18  |

The Aerovent Type TTABD Tubeaxial and VTBD Vaneaxial fans shown herein have been tested and rated in accordance with industry accepted test codes, and are guaranteed by Aerovent to deliver rated performance.

# Construction Features

## Propeller Construction

The fan propeller and hub is a precision solid casting of A319 aluminum, having seven airfoil blades and a malleable split taper lock bushing for mounting to the shaft. The blade angle setting is  $34^\circ$  at  $3/4$  radius. Propellers are statically and dynamically balanced prior to assembly. The complete fan assembly is trim balanced after final assembly. An A240 high temperature aluminum alloy propeller and high temperature lubrication are optional to make this fan suitable for airstream temperatures up to  $600^\circ\text{F}$ .



## Housing

Model TTABD and VTBD housings are made of continuously welded, heavy-gauge carbon steel with integrally rolled inlet and outlet flanges. Integral flanges are provided with bolt holes for bolting to fan accessories or ductwork. Housings can be supported by bolting the integral flanges directly to ductwork or can be provided with bolted support legs or welded clips for mounting in a horizontal or vertical position. After fabrication the housing is chemically pretreated, phosphatized, and painted with two coats of air dried acrylic enamel.

Extended grease fittings and grease leads are standardly furnished to permit relubrication of the motor bearings at the exterior of the fan housing.

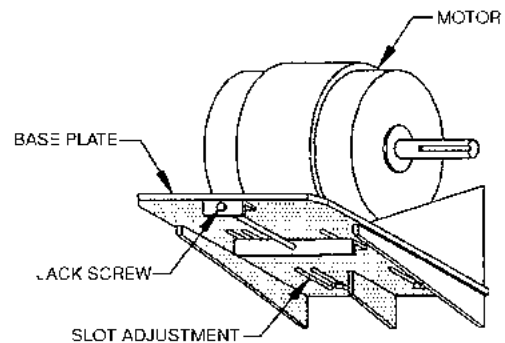
## Belt Driven Design

Well suited for applications where it is advantageous to have the motor out of the airstream due to the presence of corrosive or hazardous fumes, or dirt-laden, hot, or moist air. Arrangement 9 fans include the following features as standard equipment:

- Belts and driven sheave enclosed in a metal tube protected from the airstream.
- Single jackscrew belt tension adjustment (see detail below).
- Standard NEMA foot-mounted motors, of open drip-proof, totally enclosed or explosion-proof design are used on belt driven fans. Motors are squirrel cage induction, single speed, single winding, variable torque type for continuous duty operation.

## Adjusting Belt Tension

All belt driven units are constructed with the motor base plate welded to the outside of the fan casing which provides strength and rigidity. Except for very small motors, the adjustment of the belt tension is accomplished by means of a jackscrew as shown in the illustration below. This arrangement permits adjustment to be made with a minimum of effort, particularly when the motor is of large size.



# Accessories

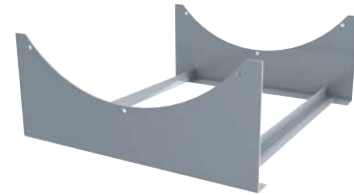
---

## Vertical Support Section

The vertical support section is a separate duct section with vertical mounting clips. This section bolts to the fan inlet or outlet and is needed when vertical mounting clips cannot be welded to the fan. (See “Mounting Arrangements,” pages 6 and 7.)

TTABD sizes 12–33 require a vertical mounting section for all vertical discharges when vertical mounting clips are needed. The vertical mounting arrangements are designated by adding an “S” to the mounting arrangement (A1, A2, A3 and A4 become SA1, SA2, SA3 and SA4.)

VTBD sizes 12–33 require a vertical mounting section for vertical floor up and vertical ceiling down only. When vertical mounting clips are needed A1 and A3 become SA1 and SA3.



## Horizontal Support Legs

Support legs are available for standard platform or floor mounting. The support legs are bolted to the inlet and discharge flange rings.

## Mounting Brackets

Clips for mounting vibration eliminators are available for vertical floor mounting or vertical and horizontal ceiling suspension.



## Inlet Bell with Guard

A spun aerodynamic inlet bell (necessary to minimize inlet losses on installations where ductwork does not precede the fan) shown bolted to fan inlet flange with an inlet guard of spiral wire bolted to inlet bell to provide personnel safety protection.



## Inlet/Outlet Cone

A round-to-round transition bolted to the inlet or discharge flange of the fan casing to provide a smooth connection of the fan to larger ductwork.



## Shaft Seal

An elastomeric Viton rotary seal rides against a heavy Teflon, bolted-in-place, wear plate which surrounds the shaft of belt driven fans to provide protection of the shaft and bearings when handling dirty, wet or corrosive air. **Note:** The seal does not make the installation gas-tight and is not appropriate in ambient temperatures above 250°F.



# Accessories

---

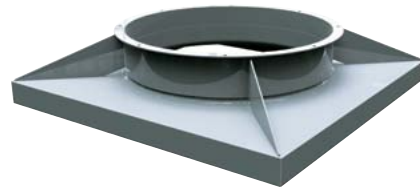
## Motor Cover

A vented cover bolted to the exterior of a belt driven fan to provide drip-proof protection of the motor and drive tube when units are installed outdoors in horizontal or vertical configuration. **Note:** The standard belt guard is not provided when a motor cover is specified.



## Curb Base

A square-to-round transition piece to convert a tubeaxial fan to a roof ventilator when mounted between a roof curb and the fan inlet flange. A stack cap or other device is necessary for weather protection in installations of this type.



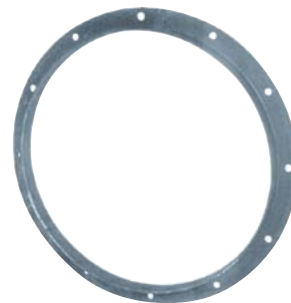
## Stack Cap

A backdraft damper assembly bolted to the fan discharge flange in vertical upblast rooftop installations. Ideally this device should be selected to handle discharge velocities ranging from 1700 (min.) to 3000 FPM (max.) and will add approximately 1/8" pressure drop to system. For higher or lower discharge velocities, consult factory.



## Companion Ring

A rolled angle ring that mates with the fan casing inlet or discharge flange to provide attachment for slip duct connections.



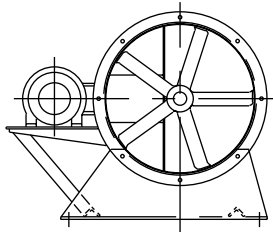
## Propeller Access Section

A short duct section with access door bolted to the inlet or discharge flange of the fan to allow for inspection or cleaning of the fan impeller. Hinged inspection door can be opened or entire half of section can be unbolted for removal of impeller.

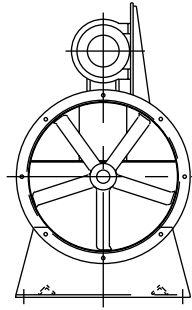


# Mounting Arrangements – TTABD Tubeaxial Fans

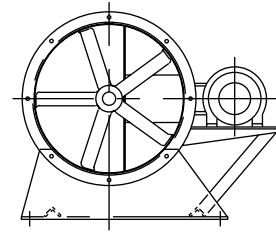
## Horizontal Floor Mounted



**Opposite Std. (Optional Std.)**  
Requires F-2 Motor

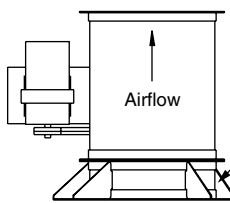


**Top**



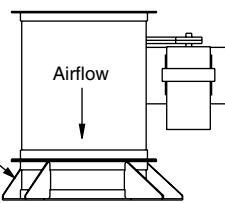
**Standard (Std.)**

## Vertical Floor & Ceiling Mounted

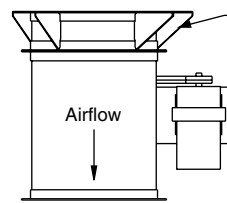


**Floor Up Discharge**  
A1 – Sizes 38–60, No  
Vert. Support Section  
SA1 – Sizes 12–33 With  
Vertical Support Section

Vertical  
Support  
Section

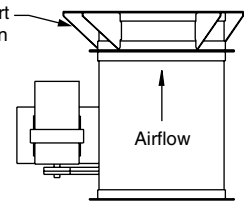


**Floor Down Discharge**  
A2 – Sizes 38–60, No  
Vert. Support Section  
SA2 – Sizes 12–33 With  
Vert. Support Section



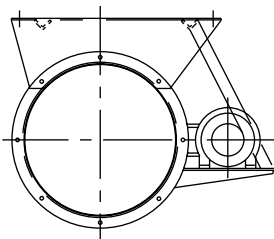
**Ceiling Down Discharge**  
A3 – Sizes 38–60, No  
Vert. Support Section  
SA3 – Sizes 12–33, With  
Vert. Support Section

Vertical  
Support  
Section

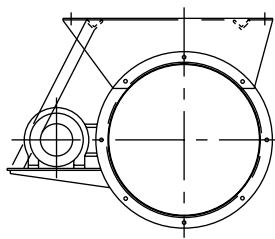


**Ceiling Up Discharge**  
A4 – Sizes 38–60, No  
Vert. Support Section  
SA4 – Sizes 12–33, With  
Vert. Support Section

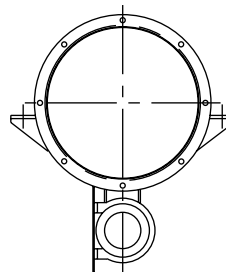
## Horizontal Ceiling Mounted



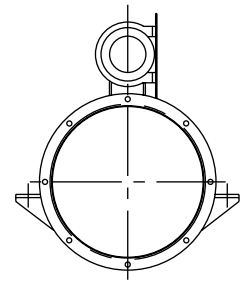
**Right Hand (A9)**



**Left Hand (A10)**  
Requires F-2 Motor



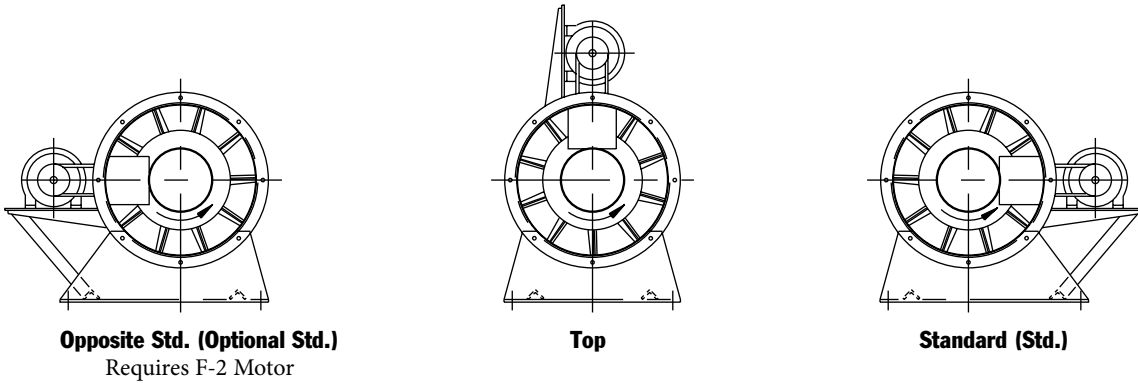
**Bottom (A11)**



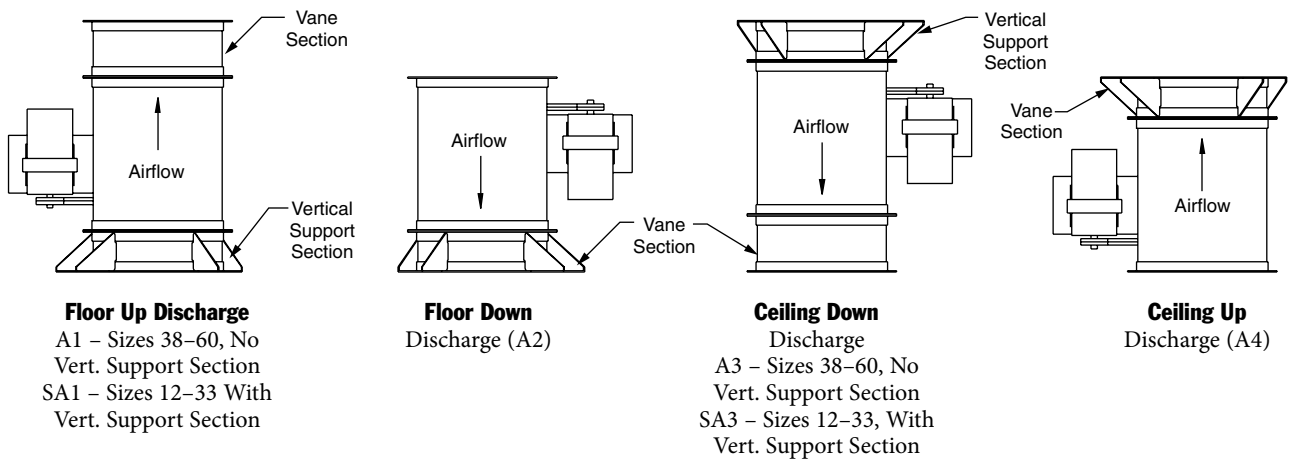
**Top (A12)**

# Mounting Arrangements – VTBD Vaneaxial Fans

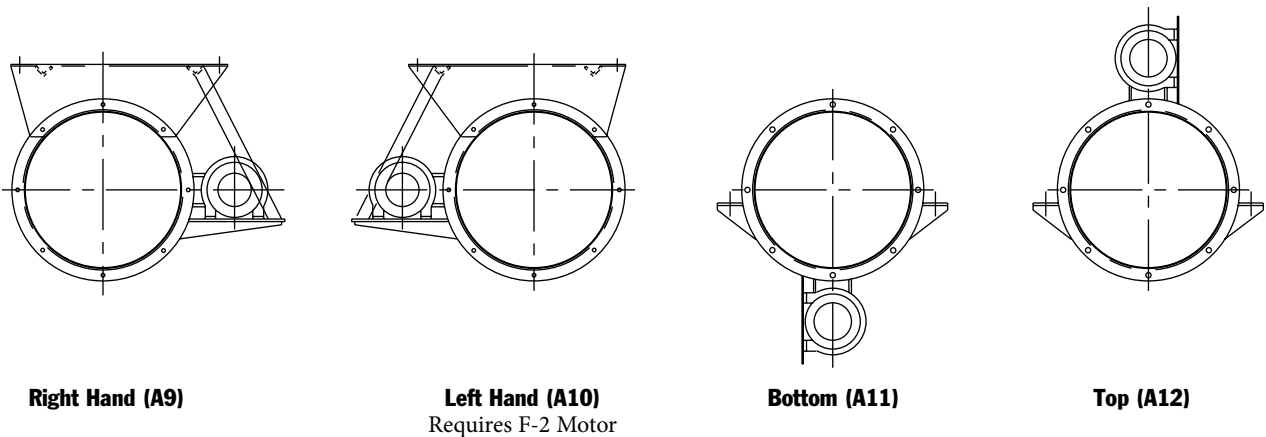
## Horizontal Floor Mounted



## Vertical Floor & Ceiling Mounted



## Horizontal Ceiling Mounted



# Optional Construction

---

## Clamshell Construction

An arrangement offering a convenient method for cleaning the propeller or servicing bearings. This feature is limited to fans of 48" and smaller.



*Clamshell Construction*

## Swingout Construction

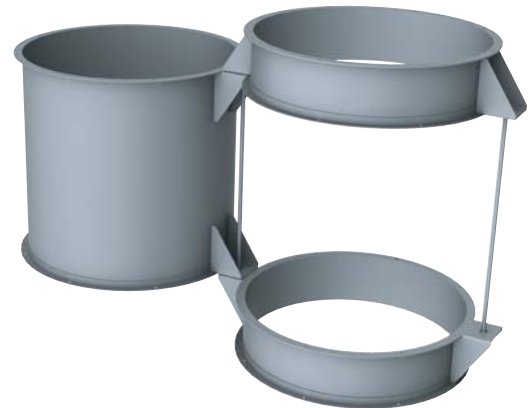
Allows for entire fan assembly to swing out freely from existing ductwork. This feature allows for easy access and servicing of fans 48" and smaller.

## Spark Resistant Construction

Belt driven fans can be furnished for AMCA Type B and C spark resistant construction with the addition of an aluminum rub ring around the fan shaft. They can be fitted for AMCA Type A spark resistant construction with all aluminum housing construction, an AMPCO 45 fan shaft, and Monel hardware in the airstream.

## Corrosion Resistant Construction

For handling corrosive fumes, etc. Fan casings can be constructed of hot dipped galvanized steel, stainless steel, aluminum, fiberglass or protected with a wide variety of suitable protective coatings such as Plasite, Heresite, Eisenheiss, etc.



*Swingout Construction*

## High Temperature Construction

Belt driven fans can be furnished to operate in temperatures ranging from 275°F to 600°F. For this construction, the fan is supplied with an A240 aluminum, solid cast propeller and high temperature bearing lubrication. Note that the fan must be energized to keep the bearings cool during high temperature operation.

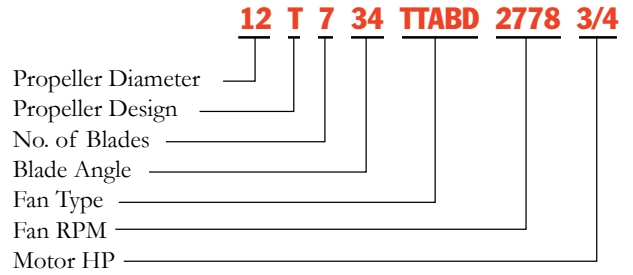




# Performance Data – Tubeaxial

## Catalog Number System

To identify a specific fan for ordering or engineering specifications, it is necessary to show the complete information listed in the tables below under “Catalog Number.” All performance data is available in curve form upon request.



## Size 12 TTABD Belt Driven Type T Tubeaxial

| CATALOG NUMBER |          |      |     | 0.250" SP |      | 0.500" SP |      | 0.750" SP |      | 1.000" SP |      | 1.250" SP |      | 1.500" SP |      | 2.000" SP |     | 2.500" SP |     |
|----------------|----------|------|-----|-----------|------|-----------|------|-----------|------|-----------|------|-----------|------|-----------|------|-----------|-----|-----------|-----|
| PROP           | FAN TYPE | RPM  | BHP | CFM       | BHP  | CFM       | BHP  | CFM       | BHP  | CFM       | BHP  | CFM       | BHP  | CFM       | BHP  | CFM       | BHP | CFM       | BHP |
| 12T734         | TTABD    | 2778 | 3/4 | 1979      | 0.69 | 1782      | 0.71 |           |      |           |      |           |      |           |      |           |     |           |     |
| 12T734         | TTABD    | 3058 | 1   | 2213      | 0.92 | 2043      | 0.94 | 1831      | 0.96 |           |      |           |      |           |      |           |     |           |     |
| 12T734         | TTABD    | 3500 | 1½  | 2574      | 1.38 | 2433      | 1.40 | 2276      | 1.42 | 2080      | 1.44 |           |      |           |      |           |     |           |     |
| 12T734         | TTABD    | 3853 | 2   | 2860      | 1.83 | 2735      | 1.85 | 2599      | 1.88 | 2447      | 1.90 | 2257      | 1.92 |           |      |           |     |           |     |
| 12T734         | TTABD    | 4410 | 3   | 3305      | 2.74 | 3199      | 2.76 | 3087      | 2.79 | 2966      | 2.82 | 2835      | 2.85 | 2681      | 2.87 |           |     |           |     |

## Size 15 TTABD Belt Driven Type T Tubeaxial

| CATALOG NUMBER |          |      |     | 0.250" SP |      | 0.500" SP |      | 0.750" SP |      | 1.000" SP |      | 1.250" SP |      | 1.500" SP |      | 2.000" SP |     | 2.500" SP |     |
|----------------|----------|------|-----|-----------|------|-----------|------|-----------|------|-----------|------|-----------|------|-----------|------|-----------|-----|-----------|-----|
| PROP           | FAN TYPE | RPM  | BHP | CFM       | BHP  | CFM       | BHP  | CFM       | BHP  | CFM       | BHP  | CFM       | BHP  | CFM       | BHP  | CFM       | BHP | CFM       | BHP |
| 15T734         | TTABD    | 1915 | 3/4 | 2577      | 0.70 | 2151      | 0.72 |           |      |           |      |           |      |           |      |           |     |           |     |
| 15T734         | TTABD    | 2108 | 1   | 2903      | 0.93 | 2564      | 0.95 |           |      |           |      |           |      |           |      |           |     |           |     |
| 15T734         | TTABD    | 2413 | 1½  | 3402      | 1.38 | 3132      | 1.41 | 2788      | 1.44 |           |      |           |      |           |      |           |     |           |     |
| 15T734         | TTABD    | 2656 | 2   | 3793      | 1.84 | 3556      | 1.87 | 3285      | 1.90 | 2910      | 1.91 |           |      |           |      |           |     |           |     |
| 15T734         | TTABD    | 3041 | 3   | 4403      | 2.75 | 4204      | 2.78 | 3987      | 2.82 | 3743      | 2.86 | 3432      | 2.87 |           |      |           |     |           |     |
| 15T734         | TTABD    | 3602 | 5   | 5279      | 4.55 | 5117      | 4.59 | 4945      | 4.63 | 4762      | 4.68 | 4566      | 4.72 | 4341      | 4.76 |           |     |           |     |

## Size 18 TTABD Belt Driven Type T Tubeaxial

| CATALOG NUMBER |          |      |     | 0.250" SP |      | 0.500" SP |      | 0.750" SP |      | 1.000" SP |      | 1.250" SP |      | 1.500" SP |      | 2.000" SP |     | 2.500" SP |     |
|----------------|----------|------|-----|-----------|------|-----------|------|-----------|------|-----------|------|-----------|------|-----------|------|-----------|-----|-----------|-----|
| PROP           | FAN TYPE | RPM  | BHP | CFM       | BHP  | CFM       | BHP  | CFM       | BHP  | CFM       | BHP  | CFM       | BHP  | CFM       | BHP  | CFM       | BHP | CFM       | BHP |
| 18T734         | TTABD    | 1370 | 1/2 | 3181      | 0.51 |           |      |           |      |           |      |           |      |           |      |           |     |           |     |
| 18T734         | TTABD    | 1568 | 3/4 | 3800      | 0.75 | 3257      | 0.77 |           |      |           |      |           |      |           |      |           |     |           |     |
| 18T734         | TTABD    | 1726 | 1   | 4276      | 0.99 | 3799      | 1.03 |           |      |           |      |           |      |           |      |           |     |           |     |
| 18T734         | TTABD    | 1976 | 1½  | 5011      | 1.46 | 4622      | 1.51 | 4180      | 1.55 |           |      |           |      |           |      |           |     |           |     |
| 18T734         | TTABD    | 2175 | 2   | 5584      | 1.94 | 5244      | 1.99 | 4860      | 2.05 | 4457      | 2.07 |           |      |           |      |           |     |           |     |
| 18T734         | TTABD    | 2490 | 3   | 6480      | 2.88 | 6193      | 2.95 | 5882      | 3.02 | 5539      | 3.07 | 5187      | 3.10 | 4787      | 3.08 |           |     |           |     |

## Size 22 TTABD Belt Driven Type T Tubeaxial

| CATALOG NUMBER |          |      |     | 0.250" SP |      | 0.500" SP |      | 0.750" SP |      | 1.000" SP |      | 1.250" SP |      | 1.500" SP |      | 2.000" SP |     | 2.500" SP |     |
|----------------|----------|------|-----|-----------|------|-----------|------|-----------|------|-----------|------|-----------|------|-----------|------|-----------|-----|-----------|-----|
| PROP           | FAN TYPE | RPM  | BHP | CFM       | BHP  | CFM       | BHP  | CFM       | BHP  | CFM       | BHP  | CFM       | BHP  | CFM       | BHP  | CFM       | BHP | CFM       | BHP |
| 22T734         | TTABD    | 984  | 1/2 | 3922      | 0.52 |           |      |           |      |           |      |           |      |           |      |           |     |           |     |
| 22T734         | TTABD    | 1126 | 3/4 | 4781      | 0.77 |           |      |           |      |           |      |           |      |           |      |           |     |           |     |
| 22T734         | TTABD    | 1239 | 1   | 5430      | 1.01 | 4582      | 1.04 |           |      |           |      |           |      |           |      |           |     |           |     |
| 22T734         | TTABD    | 1419 | 1½  | 6425      | 1.49 | 5717      | 1.55 | 4842      | 1.55 |           |      |           |      |           |      |           |     |           |     |
| 22T734         | TTABD    | 1561 | 2   | 7188      | 1.97 | 6576      | 2.04 | 5893      | 2.08 |           |      |           |      |           |      |           |     |           |     |
| 22T734         | TTABD    | 1787 | 3   | 8381      | 2.93 | 7875      | 3.02 | 7304      | 3.09 | 6706      | 3.12 |           |      |           |      |           |     |           |     |
| 22T734         | TTABD    | 2119 | 5   | 10101     | 4.84 | 9692      | 4.95 | 9252      | 5.05 | 8772      | 5.14 | 8259      | 5.20 | 7756      | 5.21 |           |     |           |     |

# Performance Data – Tubeaxial

## Size 25 TTABD Belt Driven Type T Tubeaxial

| CATALOG NUMBER |          |      |    | 0.250" SP |       | 0.500" SP |       | 0.750" SP |       | 1.000" SP |      | 1.250" SP |       | 1.500" SP |       | 2.000" SP |       | 2.500" SP |       | 3.000" SP |       |
|----------------|----------|------|----|-----------|-------|-----------|-------|-----------|-------|-----------|------|-----------|-------|-----------|-------|-----------|-------|-----------|-------|-----------|-------|
| PROP           | FAN TYPE | RPM  | HP | CFM       | BHP   | CFM       | BHP   | CFM       | BHP   | CFM       | BHP  | CFM       | BHP   | CFM       | BHP   | CFM       | BHP   | CFM       | BHP   | CFM       | BHP   |
| 25T734         | TTABD    | 1045 | 1  | 6962      | 0.95  | 5660      | 1.01  |           |       |           |      |           |       |           |       |           |       |           |       |           |       |
| 25T734         | TTABD    | 1196 | 1½ | 8244      | 1.38  | 7247      | 1.50  |           |       |           |      |           |       |           |       |           |       |           |       |           |       |
| 25T734         | TTABD    | 1316 | 2  | 9232      | 1.80  | 8395      | 1.95  | 7358      | 2.02  |           |      |           |       |           |       |           |       |           |       |           |       |
| 25T734         | TTABD    | 1507 | 3  | 10770     | 2.66  | 10099     | 2.82  | 9290      | 2.97  | 8356      | 3.03 |           |       |           |       |           |       |           |       |           |       |
| 25T734         | TTABD    | 1786 | 5  | 12973     | 4.34  | 12441     | 4.54  | 11849     | 4.73  | 11168     | 4.92 | 10409     | 5.03  | 9461      | 5.01  |           |       |           |       |           |       |
| 25T734         | TTABD    | 2045 | 7½ | 14991     | 6.45  | 14542     | 6.68  | 14058     | 6.90  | 13530     | 7.12 | 12941     | 7.34  | 12288     | 7.50  |           |       |           |       |           |       |
| 25T734         | TTABD    | 2250 | 10 | 16577     | 8.54  | 16175     | 8.79  | 15750     | 9.04  | 15297     | 9.28 | 14806     | 9.52  | 14268     | 9.76  | 13074     | 10.06 |           |       |           |       |
| 25T734         | TTABD    | 2577 | 15 | 19092     | 12.74 | 18748     | 13.03 | 18390     | 13.31 | 18015     | 13.6 | 17621     | 13.87 | 17204     | 14.15 | 16278     | 14.69 | 15234     | 15.07 | 14082     | 15.13 |

## Size 29 TTABD Belt Driven Type T Tubeaxial

| CATALOG NUMBER |          |      |    | 0.250" SP |       | 0.500" SP |       | 0.750" SP |       | 1.000" SP |       | 1.250" SP |       | 1.500" SP |       | 2.000" SP |       | 2.500" SP |       | 3.000" SP |       |
|----------------|----------|------|----|-----------|-------|-----------|-------|-----------|-------|-----------|-------|-----------|-------|-----------|-------|-----------|-------|-----------|-------|-----------|-------|
| PROP           | FAN TYPE | RPM  | HP | CFM       | BHP   | CFM       | BHP   | CFM       | BHP   | CFM       | BHP   | CFM       | BHP   | CFM       | BHP   | CFM       | BHP   | CFM       | BHP   | CFM       | BHP   |
| 29T734         | TTABD    | 816  | 1  | 8187      | 0.97  |           |       |           |       |           |       |           |       |           |       |           |       |           |       |           |       |
| 29T734         | TTABD    | 934  | 1½ | 9815      | 1.41  | 8215      | 1.51  |           |       |           |       |           |       |           |       |           |       |           |       |           |       |
| 29T734         | TTABD    | 1028 | 2  | 11054     | 1.84  | 9705      | 2.00  |           |       |           |       |           |       |           |       |           |       |           |       |           |       |
| 29T734         | TTABD    | 1177 | 3  | 12961     | 2.70  | 11905     | 2.89  | 10602     | 3.03  |           |       |           |       |           |       |           |       |           |       |           |       |
| 29T734         | TTABD    | 1395 | 5  | 15680     | 4.39  | 14864     | 4.63  | 13916     | 4.86  | 12809     | 5.02  |           |       |           |       |           |       |           |       |           |       |
| 29T734         | TTABD    | 1597 | 7½ | 18156     | 6.50  | 17473     | 6.78  | 16722     | 7.04  | 15869     | 7.31  | 14902     | 7.51  | 13874     | 7.57  |           |       |           |       |           |       |
| 29T734         | TTABD    | 1758 | 10 | 20112     | 8.61  | 19505     | 8.92  | 18852     | 9.21  | 18138     | 9.51  | 17342     | 9.80  | 16458     | 10.01 |           |       |           |       |           |       |
| 29T734         | TTABD    | 3012 | 15 | 23175     | 12.80 | 22658     | 13.15 | 22112     | 13.50 | 21534     | 13.83 | 20915     | 14.17 | 20242     | 14.51 | 18725     | 15.03 | 16981     | 15.11 |           |       |
| 29T734         | TTABD    | 2214 | 20 | 25599     | 16.97 | 25134     | 17.36 | 24650     | 17.74 | 24144     | 18.12 | 23611     | 18.49 | 23047     | 18.86 | 21793     | 19.59 | 20382     | 20.08 | 18802     | 20.15 |

## Size 33 TTABD Belt Driven Type T Tubeaxial

| CATALOG NUMBER |          |      |    | 0.250" SP |       | 0.500" SP |       | 0.750" SP |       | 1.000" SP |       | 1.250" SP |       | 1.500" SP |       | 2.000" SP |       | 2.500" SP |       | 3.000" SP |       |
|----------------|----------|------|----|-----------|-------|-----------|-------|-----------|-------|-----------|-------|-----------|-------|-----------|-------|-----------|-------|-----------|-------|-----------|-------|
| PROP           | FAN TYPE | RPM  | HP | CFM       | BHP   | CFM       | BHP   | CFM       | BHP   | CFM       | BHP   | CFM       | BHP   | CFM       | BHP   | CFM       | BHP   | CFM       | BHP   | CFM       | BHP   |
| 33T734         | TTABD    | 829  | 2  | 12871     | 1.87  | 10839     | 2.02  |           |       |           |       |           |       |           |       |           |       |           |       |           |       |
| 33T734         | TTABD    | 949  | 3  | 15182     | 2.73  | 13590     | 2.96  |           |       |           |       |           |       |           |       |           |       |           |       |           |       |
| 33T734         | TTABD    | 1125 | 5  | 18460     | 4.44  | 17264     | 4.72  | 15813     | 4.98  | 14106     | 5.04  |           |       |           |       |           |       |           |       |           |       |
| 33T734         | TTABD    | 1287 | 7½ | 21413     | 6.55  | 20423     | 6.87  | 19299     | 7.19  | 17986     | 7.47  | 16550     | 7.56  |           |       |           |       |           |       |           |       |
| 33T734         | TTABD    | 1417 | 10 | 23755     | 8.66  | 22881     | 9.02  | 21922     | 9.37  | 20838     | 9.72  | 19608     | 9.99  | 18310     | 10.09 |           |       |           |       |           |       |
| 33T734         | TTABD    | 1622 | 15 | 27417     | 12.86 | 26676     | 13.28 | 25885     | 13.68 | 25032     | 14.08 | 24093     | 14.48 | 23057     | 14.85 | 20783     | 15.14 |           |       |           |       |
| 33T734         | TTABD    | 1785 | 20 | 30310     | 17.04 | 29646     | 17.50 | 28948     | 17.95 | 28210     | 18.40 | 27421     | 18.83 | 26564     | 19.28 | 24633     | 19.99 | 22478     | 20.16 |           |       |
| 33T734         | TTABD    | 1923 | 25 | 32749     | 21.22 | 32140     | 21.72 | 31504     | 22.22 | 30837     | 22.70 | 30135     | 23.17 | 29389     | 23.64 | 27727     | 24.57 | 25871     | 25.14 | 23650     | 25.12 |
| 33T734         | TTABD    | 2044 | 30 | 34883     | 25.42 | 34313     | 25.95 | 33722     | 26.48 | 33107     | 26.99 | 32465     | 27.50 | 31791     | 28.00 | 30315     | 29.01 | 28644     | 29.88 | 26872     | 30.27 |

## Size 38 TTABD Belt Driven Type T Tubeaxial

| CATALOG NUMBER |          |      |    | 0.250" SP |       | 0.500" SP |       | 0.750" SP |       | 1.000" SP |       | 1.250" SP |       | 1.500" SP |       | 2.000" SP |       | 2.500" SP |       | 3.000" SP |     |
|----------------|----------|------|----|-----------|-------|-----------|-------|-----------|-------|-----------|-------|-----------|-------|-----------|-------|-----------|-------|-----------|-------|-----------|-----|
| PROP           | FAN TYPE | RPM  | HP | CFM       | BHP   | CFM       | BHP   | CFM       | BHP   | CFM       | BHP   | CFM       | BHP   | CFM       | BHP   | CFM       | BHP   | CFM       | BHP   | CFM       | BHP |
| 38T734         | TTABD    | 645  | 2  | 14751     | 1.92  |           |       |           |       |           |       |           |       |           |       |           |       |           |       |           |     |
| 38T734         | TTABD    | 739  | 3  | 17577     | 2.82  | 15226     | 2.98  |           |       |           |       |           |       |           |       |           |       |           |       |           |     |
| 38T734         | TTABD    | 876  | 5  | 21535     | 4.59  | 19739     | 4.83  | 17632     | 5.01  |           |       |           |       |           |       |           |       |           |       |           |     |
| 38T734         | TTABD    | 1003 | 7½ | 25108     | 6.78  | 23609     | 7.10  | 21947     | 7.32  | 20056     | 7.53  |           |       |           |       |           |       |           |       |           |     |
| 38T734         | TTABD    | 1104 | 10 | 27909     | 8.96  | 26581     | 9.33  | 25143     | 9.62  | 23548     | 9.84  | 21789     | 10.08 |           |       |           |       |           |       |           |     |
| 38T734         | TTABD    | 1263 | 15 | 32271     | 13.28 | 31141     | 13.72 | 29942     | 14.12 | 28668     | 14.43 | 27287     | 14.68 | 25783     | 14.94 |           |       |           |       |           |     |
| 38T734         | TTABD    | 1390 | 20 | 35726     | 17.59 | 34714     | 18.09 | 33653     | 18.55 | 32538     | 18.96 | 31364     | 19.28 | 30105     | 19.55 | 27321     | 20.13 |           |       |           |     |
| 38T734         | TTABD    | 1498 | 25 | 38650     | 21.92 | 37719     | 22.48 | 36751     | 22.99 | 35742     | 23.46 | 34688     | 23.86 | 33583     | 24.19 | 31140     | 24.77 | 28270     | 25.32 |           |     |

## Size 43 TTABD Belt Driven Type T Tubeaxial

| CATALOG NUMBER |          |      |    | 0.250" SP |       | 0.500" SP |       | 0.750" SP |       | 1.000" SP |       | 1.250" SP |       | 1.500" SP |       | 2.000" SP |       | 2.500" SP |       | 3.000" SP |       |
|----------------|----------|------|----|-----------|-------|-----------|-------|-----------|-------|-----------|-------|-----------|-------|-----------|-------|-----------|-------|-----------|-------|-----------|-------|
| PROP           | FAN TYPE | RPM  | HP | CFM       | BHP   | CFM       | BHP   | CFM       | BHP   | CFM       | BHP   | CFM       | BHP   | CFM       | BHP   | CFM       | BHP   | CFM       | BHP   | CFM       | BHP   |
| 43T734         | TTABD    | 526  | 2  | 16891     | 1.95  |           |       |           |       |           |       |           |       |           |       |           |       |           |       |           |       |
| 43T734         | TTABD    | 603  | 3  | 20344     | 2.88  | 16865     | 3.06  |           |       |           |       |           |       |           |       |           |       |           |       |           |       |
| 43T734         | TTABD    | 714  | 5  | 25080     | 4.66  | 22485     | 4.91  | 18990     | 5.07  |           |       |           |       |           |       |           |       |           |       |           |       |
| 43T734         | TTABD    | 818  | 7½ | 29373     | 6.89  | 27241     | 7.23  | 24781     | 7.47  |           |       |           |       |           |       |           |       |           |       |           |       |
| 43T734         | TTABD    | 900  | 10 | 32700     | 9.08  | 30818     | 9.49  | 28741     | 9.79  | 26382     | 10.06 |           |       |           |       |           |       |           |       |           |       |
| 43T734         | TTABD    | 1030 | 15 | 37905     | 13.44 | 36313     | 13.95 | 34606     | 14.38 | 32755     | 14.70 | 30696     | 14.99 | 28337     | 15.27 |           |       |           |       |           |       |
| 43T734         | TTABD    | 1134 | 20 | 42027     | 17.81 | 40607     | 18.39 | 39103     | 18.91 | 37509     | 19.33 | 35792     | 19.66 | 33910     | 19.99 |           |       |           |       |           |       |
| 43T734         | TTABD    | 1222 | 25 | 45495     | 22.18 | 44191     | 22.82 | 42824     | 23.40 | 41386     | 23.92 | 39871     | 24.32 | 38242     | 24.67 | 34634     | 25.41 |           |       |           |       |
| 43T734         | TTABD    | 1298 | 30 | 48478     | 26.49 | 47260     | 27.18 | 45991     | 27.82 | 44664     | 28.40 | 43277     | 28.89 | 41816     | 29.29 | 38584     | 30.03 |           |       |           |       |
| 43T734         | TTABD    | 1429 | 40 | 53600     | 35.18 | 52505     | 35.95 | 51373     | 36.68 | 50201     | 37.36 | 48984     | 37.98 | 47722     | 38.52 | 45017     | 39.37 | 42018     | 40.22 | 38066     | 40.68 |

# Performance Data – Tubeaxial

## Size 48 TTABD Belt Driven Type T Tubeaxial

| CATALOG NUMBER |          |      |    | 0.250" SP |       | 0.500" SP |       | 0.750" SP |       | 1.000" SP |       | 1.250" SP |       | 1.500" SP |       | 2.000" SP |       | 2.500" SP |       | 3.000" SP |       |
|----------------|----------|------|----|-----------|-------|-----------|-------|-----------|-------|-----------|-------|-----------|-------|-----------|-------|-----------|-------|-----------|-------|-----------|-------|
| PROP           | FAN TYPE | RPM  | HP | CFM       | BHP   | CFM       | BHP   | CFM       | BHP   | CFM       | BHP   | CFM       | BHP   | CFM       | BHP   | CFM       | BHP   | CFM       | BHP   | CFM       | BHP   |
| 48T734         | TTABD    | 503  | 3  | 23062     | 2.93  |           |       |           |       |           |       |           |       |           |       |           |       |           |       |           |       |
| 48T734         | TTABD    | 596  | 5  | 28694     | 4.75  | 25053     | 5.01  |           |       |           |       |           |       |           |       |           |       |           |       |           |       |
| 48T734         | TTABD    | 682  | 7½ | 33701     | 6.98  | 30765     | 7.35  | 27300     | 7.63  |           |       |           |       |           |       |           |       |           |       |           |       |
| 48T734         | TTABD    | 751  | 10 | 37634     | 9.21  | 35063     | 9.67  | 32136     | 9.97  | 28617     | 10.26 |           |       |           |       |           |       |           |       |           |       |
| 48T734         | TTABD    | 859  | 15 | 43695     | 13.60 | 41531     | 14.17 | 39179     | 14.62 | 36544     | 14.95 | 33618     | 15.32 |           |       |           |       |           |       |           |       |
| 48T734         | TTABD    | 946  | 20 | 48521     | 18.01 | 46596     | 18.67 | 44538     | 19.24 | 42325     | 19.66 | 39864     | 20.03 | 37218     | 20.44 |           |       |           |       |           |       |
| 48T734         | TTABD    | 1019 | 25 | 52541     | 22.39 | 50777     | 23.12 | 48912     | 23.77 | 46933     | 24.30 | 44806     | 24.72 | 42472     | 25.12 |           |       |           |       |           |       |
| 48T734         | TTABD    | 1083 | 30 | 56050     | 26.78 | 54406     | 27.57 | 52679     | 28.28 | 50861     | 28.90 | 48940     | 29.40 | 46868     | 29.81 | 42241     | 30.71 |           |       |           |       |
| 48T734         | TTABD    | 1192 | 40 | 61999     | 35.51 | 60523     | 36.40 | 58988     | 37.22 | 57388     | 37.98 | 55718     | 38.63 | 53969     | 39.17 | 50106     | 40.10 | 45656     | 41.03 |           |       |
| 48T734         | TTABD    | 1284 | 50 | 67000     | 44.23 | 65639     | 45.19 | 64234     | 46.11 | 62779     | 46.96 | 61269     | 47.73 | 59703     | 48.41 | 56349     | 49.48 | 52630     | 40.53 | 47886     | 51.20 |
| 48T734         | TTABD    | 1364 | 60 | 71336     | 52.88 | 70062     | 53.92 | 68752     | 54.91 | 67401     | 55.84 | 66007     | 56.70 | 64566     | 57.50 | 61530     | 58.77 | 58182     | 59.81 | 54600     | 61.01 |

## Size 54 TTABD Belt Driven Type T Tubeaxial

| CATALOG NUMBER |          |     |    | 0.250" SP |       | 0.500" SP |       | 0.750" SP |       | 1.000" SP |       | 1.250" SP |       | 1.500" SP |       | 2.000" SP |       | 2.500" SP |     | 3.000" SP |     |
|----------------|----------|-----|----|-----------|-------|-----------|-------|-----------|-------|-----------|-------|-----------|-------|-----------|-------|-----------|-------|-----------|-----|-----------|-----|
| PROP           | FAN TYPE | RPM | HP | CFM       | BHP   | CFM       | BHP   | CFM       | BHP   | CFM       | BHP   | CFM       | BHP   | CFM       | BHP   | CFM       | BHP   | CFM       | BHP | CFM       | BHP |
| 54T734         | TTABD    | 412 | 3  | 26006     | 2.94  |           |       |           |       |           |       |           |       |           |       |           |       |           |     |           |     |
| 54T734         | TTABD    | 488 | 5  | 32761     | 4.76  | 27470     | 5.05  |           |       |           |       |           |       |           |       |           |       |           |     |           |     |
| 54T734         | TTABD    | 559 | 7½ | 38760     | 7.00  | 34554     | 7.38  |           |       |           |       |           |       |           |       |           |       |           |     |           |     |
| 54T734         | TTABD    | 615 | 10 | 43370     | 9.21  | 39730     | 9.69  | 35459     | 10.04 |           |       |           |       |           |       |           |       |           |     |           |     |
| 54T734         | TTABD    | 704 | 15 | 50557     | 13.60 | 47521     | 14.23 | 44149     | 14.68 | 40313     | 15.10 |           |       |           |       |           |       |           |     |           |     |
| 54T734         | TTABD    | 775 | 20 | 56209     | 17.97 | 53519     | 18.71 | 50606     | 19.30 | 47370     | 19.73 | 43800     | 20.21 |           |       |           |       |           |     |           |     |
| 54T734         | TTABD    | 835 | 25 | 60946     | 22.34 | 58489     | 23.16 | 55860     | 23.87 | 53027     | 24.39 | 49873     | 24.85 | 46447     | 25.36 |           |       |           |     |           |     |
| 54T734         | TTABD    | 887 | 30 | 65028     | 26.65 | 62740     | 27.55 | 60313     | 28.34 | 57733     | 28.97 | 54934     | 29.47 | 51889     | 30.00 |           |       |           |     |           |     |
| 54T734         | TTABD    | 977 | 40 | 72055     | 35.40 | 70008     | 36.41 | 67863     | 37.34 | 65608     | 38.15 | 63232     | 38.80 | 60684     | 39.35 | 55047     | 40.52 |           |     |           |     |

## Size 60 TTABD Belt Driven Type T Tubeaxial

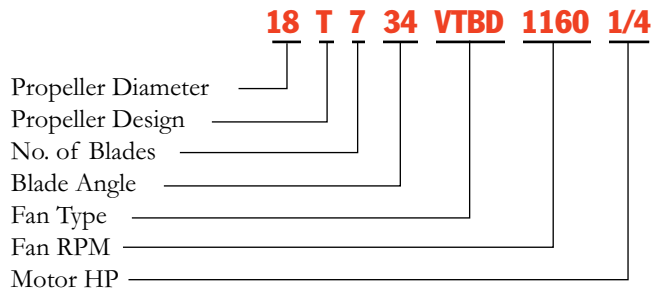
| CATALOG NUMBER |          |     |    | 0.250" SP |       | 0.500" SP |       | 0.750" SP |       | 1.000" SP |       | 1.250" SP |       | 1.500" SP |       | 2.000" SP |     | 2.500" SP |     | 3.000" SP |     |
|----------------|----------|-----|----|-----------|-------|-----------|-------|-----------|-------|-----------|-------|-----------|-------|-----------|-------|-----------|-----|-----------|-----|-----------|-----|
| PROP           | FAN TYPE | RPM | HP | CFM       | BHP   | CFM       | BHP   | CFM       | BHP   | CFM       | BHP   | CFM       | BHP   | CFM       | BHP   | CFM       | BHP | CFM       | BHP | CFM       | BHP |
| 60T734         | TTABD    | 413 | 5  | 37320     | 4.93  |           |       |           |       |           |       |           |       |           |       |           |     |           |     |           |     |
| 60T734         | TTABD    | 473 | 7½ | 44395     | 7.25  | 38632     | 7.66  |           |       |           |       |           |       |           |       |           |     |           |     |           |     |
| 60T734         | TTABD    | 520 | 10 | 49772     | 9.50  | 44845     | 10.01 | 38668     | 10.40 |           |       |           |       |           |       |           |     |           |     |           |     |
| 60T734         | TTABD    | 596 | 15 | 58273     | 14.06 | 54212     | 14.76 | 49568     | 15.24 | 43814     | 15.65 |           |       |           |       |           |     |           |     |           |     |
| 60T734         | TTABD    | 656 | 20 | 64871     | 18.56 | 61285     | 19.40 | 57348     | 20.01 | 52879     | 20.52 |           |       |           |       |           |     |           |     |           |     |
| 60T734         | TTABD    | 706 | 25 | 70317     | 22.98 | 67046     | 23.92 | 63511     | 24.66 | 59608     | 25.21 | 55304     | 25.81 |           |       |           |     |           |     |           |     |
| 60T734         | TTABD    | 750 | 30 | 75080     | 27.42 | 72039     | 28.43 | 68786     | 29.30 | 65277     | 29.94 | 61369     | 30.51 | 57109     | 31.13 |           |     |           |     |           |     |
| 60T734         | TTABD    | 826 | 40 | 83254     | 36.37 | 80540     | 37.53 | 77674     | 38.56 | 74640     | 39.42 | 71393     | 40.09 | 67823     | 40.71 |           |     |           |     |           |     |



# Performance Data – Vaneaxial

## Catalog Number System

To identify a specific fan for ordering or engineering specifications, it is necessary to show the complete information listed in the tables below under “Catalog Number.” All performance data is available in curve form upon request.



## Size 12 VTBD Belt Driven Type T Vaneaxial

| CATALOG NUMBER |          |      |     | 0.250" SP |       | 0.500" SP |       | 0.750" SP |       | 1.000" SP |       | 1.250" SP |      | 1.500" SP |      | 2.000" SP |      | 2.500" SP |      | 3.000" SP |     |
|----------------|----------|------|-----|-----------|-------|-----------|-------|-----------|-------|-----------|-------|-----------|------|-----------|------|-----------|------|-----------|------|-----------|-----|
| PROP           | FAN TYPE | RPM  | HP  | CFM       | BHP   | CFM       | BHP   | CFM       | BHP   | CFM       | BHP   | CFM       | BHP  | CFM       | BHP  | CFM       | BHP  | CFM       | BHP  | CFM       | BHP |
| 12T734         | VTBD     | 2778 | 3/4 | 1978      | 0.734 | 1861      | 0.752 | 1723      | 0.751 | 1565      | 0.753 |           |      |           |      |           |      |           |      |           |     |
| 12T734         | VTBD     | 3058 | 1   | 2199      | 0.974 | 2095      | 0.996 | 1979      | 1.01  | 1846      | 1.00  | 1698      | 1.00 |           |      |           |      |           |      |           |     |
| 12T734         | VTBD     | 3500 | 1½  | 2543      | 1.45  | 2456      | 1.48  | 2361      | 1.50  | 2258      | 1.51  | 2142      | 1.50 | 2017      | 1.50 |           |      |           |      |           |     |
| 12T734         | VTBD     | 3853 | 2   | 2816      | 1.93  | 2738      | 1.96  | 2655      | 1.99  | 2567      | 2.01  | 2470      | 2.01 | 2365      | 2.00 | 2131      | 2.01 |           |      |           |     |
| 12T734         | VTBD     | 4410 | 3   | 3243      | 2.88  | 3177      | 2.92  | 3107      | 2.95  | 3034      | 2.98  | 2957      | 3.01 | 2875      | 3.01 | 2693      | 3.00 | 2492      | 3.01 |           |     |

## Size 15 VTBD Belt Driven Type T Vaneaxial

| CATALOG NUMBER |          |      |     | 0.250" SP |       | 0.500" SP |       | 0.750" SP |       | 1.000" SP |      | 1.250" SP |      | 1.500" SP |      | 2.000" SP |      | 2.500" SP |      | 3.000" SP |      |
|----------------|----------|------|-----|-----------|-------|-----------|-------|-----------|-------|-----------|------|-----------|------|-----------|------|-----------|------|-----------|------|-----------|------|
| PROP           | FAN TYPE | RPM  | HP  | CFM       | BHP   | CFM       | BHP   | CFM       | BHP   | CFM       | BHP  | CFM       | BHP  | CFM       | BHP  | CFM       | BHP  | CFM       | BHP  | CFM       | BHP  |
| 15T734         | VTBD     | 1915 | 3/4 | 2610      | 0.742 | 2380      | 0.753 | 2097      | 0.753 |           |      |           |      |           |      |           |      |           |      |           |      |
| 15T734         | VTBD     | 2108 | 1   | 2913      | 0.983 | 2714      | 1.00  | 2478      | 1.00  | 2185      | 1.00 |           |      |           |      |           |      |           |      |           |      |
| 15T734         | VTBD     | 2413 | 1½  | 3384      | 1.46  | 3219      | 1.50  | 3034      | 1.51  | 2820      | 1.50 | 2579      | 1.51 |           |      |           |      |           |      |           |      |
| 15T734         | VTBD     | 2656 | 2   | 3755      | 1.94  | 3609      | 1.98  | 3449      | 2.01  | 3272      | 2.01 | 3073      | 2.00 | 2853      | 2.01 |           |      |           |      |           |      |
| 15T734         | VTBD     | 3041 | 3   | 4337      | 2.89  | 4213      | 2.95  | 4081      | 2.99  | 3940      | 3.01 | 3786      | 3.01 | 3618      | 3.00 | 3236      | 3.02 |           |      |           |      |
| 15T734         | VTBD     | 3602 | 5   | 5178      | 4.78  | 5076      | 4.85  | 4969      | 4.91  | 4858      | 4.96 | 4741      | 4.99 | 4618      | 5.01 | 4346      | 5.00 | 4044      | 5.00 | 3643      | 4.98 |

## Size 18 VTBD Belt Driven Type T Vaneaxial

| CATALOG NUMBER |          |      |     | 0.250" SP |      | 0.500" SP |       | 0.750" SP |       | 1.000" SP |       | 1.250" SP |      | 1.500" SP |      |
|----------------|----------|------|-----|-----------|------|-----------|-------|-----------|-------|-----------|-------|-----------|------|-----------|------|
| PROP           | FAN TYPE | RPM  | HP  | CFM       | BHP  | CFM       | BHP   | CFM       | BHP   | CFM       | BHP   | CFM       | BHP  | CFM       | BHP  |
| 18T734         | VTBD     | 1370 | 0.5 | 3287      | 0.48 | 2822      | 0.503 |           |       |           |       |           |      |           |      |
| 18T734         | VTBD     | 1568 | 3/4 | 3870      | 0.72 | 3502      | 0.745 | 3032      | 0.751 |           |       |           |      |           |      |
| 18T734         | VTBD     | 1726 | 1   | 4325      | 0.95 | 4004      | 0.981 | 3629      | 1.00  | 3133      | 0.993 |           |      |           |      |
| 18T734         | VTBD     | 1976 | 1½  | 5032      | 1.41 | 4763      | 1.45  | 4468      | 1.48  | 4130      | 1.51  | 3708      | 1.50 |           |      |
| 18T734         | VTBD     | 2175 | 2   | 5588      | 1.87 | 5349      | 1.92  | 5092      | 1.96  | 4813      | 1.99  | 4494      | 2.01 | 4108      | 2.00 |
| 18T734         | VTBD     | 2490 | 3   | 6459      | 2.80 | 6256      | 2.85  | 6041      | 2.89  | 5814      | 2.94  | 5572      | 2.98 | 5305      | 3.01 |
| 18T734         | VTBD     | 2952 | 5   | 7725      | 4.64 | 7557      | 4.70  | 7383      | 4.75  | 7202      | 4.81  | 7014      | 4.86 | 6818      | 4.91 |
| 18T734         | VTBD     | 3379 | 7½  | 8887      | 6.94 | 8742      | 7.00  | 8594      | 7.07  | 8441      | 7.13  | 8283      | 7.19 | 8120      | 7.25 |
| CATALOG NUMBER |          |      |     | 2.000" SP |      | 2.500" SP |       | 3.000" SP |       | 3.500" SP |       | 4.000" SP |      | 4.500" SP |      |
| PROP           | FAN TYPE | RPM  | HP  | CFM       | BHP  | CFM       | BHP   | CFM       | BHP   | CFM       | BHP   | CFM       | BHP  | CFM       | BHP  |
| 18T734         | VTBD     | 1370 | 0.5 |           |      |           |       |           |       |           |       |           |      |           |      |
| 18T734         | VTBD     | 1568 | 3/4 |           |      |           |       |           |       |           |       |           |      |           |      |
| 18T734         | VTBD     | 1726 | 1   |           |      |           |       |           |       |           |       |           |      |           |      |
| 18T734         | VTBD     | 1976 | 1½  |           |      |           |       |           |       |           |       |           |      |           |      |
| 18T734         | VTBD     | 2175 | 2   |           |      |           |       |           |       |           |       |           |      |           |      |
| 18T734         | VTBD     | 2490 | 3   | 4648      | 2.99 |           |       |           |       |           |       |           |      |           |      |
| 18T734         | VTBD     | 2952 | 5   | 6391      | 5.01 | 5891      | 5.03  | 5258      | 4.96  |           |       |           |      |           |      |
| 18T734         | VTBD     | 3379 | 7½  | 7779      | 7.38 | 7410      | 7.49  | 6996      | 7.54  | 6515      | 7.51  | 5933      | 7.42 |           |      |

# Performance Data – Vaneaxial

## Size 22 VTBD Belt Driven Type T Vaneaxial

| CATALOG NUMBER |          |      |     | 0.250" SP |       | 0.500" SP |       | 0.750" SP |      | 1.000" SP |      | 1.250" SP |      | 1.500" SP |      | 2.000" SP |      | 2.500" SP |      | 3.000" SP |      |
|----------------|----------|------|-----|-----------|-------|-----------|-------|-----------|------|-----------|------|-----------|------|-----------|------|-----------|------|-----------|------|-----------|------|
| PROP           | FAN TYPE | RPM  | HP  | CFM       | BHP   | CFM       | BHP   | CFM       | BHP  | CFM       | BHP  | CFM       | BHP  | CFM       | BHP  | CFM       | BHP  | CFM       | BHP  | CFM       | BHP  |
| 22T734         | VTBD     | 984  | 1/2 | 4146      | 0.496 | 3189      | 0.500 |           |      |           |      |           |      |           |      |           |      |           |      |           |      |
| 22T734         | VTBD     | 1126 | 3/4 | 4937      | 0.732 | 4249      | 0.761 |           |      |           |      |           |      |           |      |           |      |           |      |           |      |
| 22T734         | VTBD     | 1239 | 1   | 5547      | 0.967 | 4967      | 1.01  | 4182      | 1.00 |           |      |           |      |           |      |           |      |           |      |           |      |
| 22T734         | VTBD     | 1419 | 1½  | 6496      | 1.44  | 6019      | 1.49  | 5466      | 1.52 | 4734      | 1.51 |           |      |           |      |           |      |           |      |           |      |
| 22T734         | VTBD     | 1561 | 2   | 7231      | 1.90  | 6811      | 1.96  | 6345      | 2.01 | 5797      | 2.03 | 5085      | 2.00 |           |      |           |      |           |      |           |      |
| 22T734         | VTBD     | 1787 | 3   | 8386      | 2.84  | 8030      | 2.90  | 7649      | 2.96 | 7234      | 3.01 | 6762      | 3.04 | 6195      | 3.03 |           |      |           |      |           |      |
| 22T734         | VTBD     | 2119 | 5   | 10060     | 4.70  | 9769      | 4.77  | 9464      | 4.84 | 9142      | 4.91 | 8803      | 4.98 | 8437      | 5.04 | 7574      | 5.06 |           |      |           |      |
| 22T734         | VTBD     | 2426 | 7½  | 11594     | 7.02  | 11344     | 7.11  | 11085     | 7.19 | 10816     | 7.27 | 10536     | 7.35 | 10245     | 7.43 | 9614      | 7.57 | 8875      | 7.61 | 7942      | 7.51 |

## Size 25 VTBD Belt Driven Type T Vaneaxial

| CATALOG NUMBER |          |      |    | 0.250" SP |       | 0.500" SP |       | 0.750" SP |       | 1.000" SP |       | 1.250" SP |       | 1.500" SP |       |
|----------------|----------|------|----|-----------|-------|-----------|-------|-----------|-------|-----------|-------|-----------|-------|-----------|-------|
| PROP           | FAN TYPE | RPM  | HP | CFM       | BHP   | CFM       | BHP   | CFM       | BHP   | CFM       | BHP   | CFM       | BHP   | CFM       | BHP   |
| 25T734         | VTBD     | 1045 | 1  | 6971      | 0.933 | 6175      | 1.00  | 5051      | 0.98  |           |       |           |       |           |       |
| 25T734         | VTBD     | 1196 | 1½ | 8181      | 1.38  | 7516      | 1.46  | 6761      | 1.51  | 5675      | 1.46  |           |       |           |       |
| 25T734         | VTBD     | 1316 | 2  | 9126      | 1.81  | 8528      | 1.90  | 7896      | 1.99  | 7144      | 2.01  |           |       |           |       |
| 25T734         | VTBD     | 1507 | 3  | 10609     | 2.69  | 10094     | 2.79  | 9565      | 2.89  | 9003      | 2.99  | 8358      | 3.02  | 7528      | 2.97  |
| 25T734         | VTBD     | 1786 | 5  | 12744     | 4.44  | 12317     | 4.55  | 11878     | 4.67  | 11432     | 4.79  | 10972     | 4.91  | 10471     | 5.00  |
| 25T734         | VTBD     | 2045 | 7½ | 14706     | 6.62  | 14337     | 6.75  | 13960     | 6.89  | 13575     | 7.02  | 13185     | 7.16  | 12790     | 7.30  |
| 25T734         | VTBD     | 2251 | 10 | 16257     | 8.79  | 15924     | 8.94  | 15585     | 9.09  | 15239     | 9.24  | 14888     | 9.38  | 14534     | 9.54  |
| 25T734         | VTBD     | 2577 | 15 | 18701     | 13.14 | 18412     | 13.31 | 18119     | 13.48 | 17821     | 13.65 | 17520     | 13.82 | 17215     | 13.98 |
| CATALOG NUMBER |          |      |    | 2.000" SP |       | 2.500" SP |       | 3.000" SP |       | 3.500" SP |       | 4.000" SP |       | 4.500" SP |       |
| PROP           | FAN TYPE | RPM  | HP | CFM       | BHP   | CFM       | BHP   | CFM       | BHP   | CFM       | BHP   | CFM       | BHP   | CFM       | BHP   |
| 25T734         | VTBD     | 1045 | 1  |           |       |           |       |           |       |           |       |           |       |           |       |
| 25T734         | VTBD     | 1196 | 1½ |           |       |           |       |           |       |           |       |           |       |           |       |
| 25T734         | VTBD     | 1316 | 2  |           |       |           |       |           |       |           |       |           |       |           |       |
| 25T734         | VTBD     | 1507 | 3  |           |       |           |       |           |       |           |       |           |       |           |       |
| 25T734         | VTBD     | 1786 | 5  | 9260      | 5.00  |           |       |           |       |           |       |           |       |           |       |
| 25T734         | VTBD     | 2045 | 7½ | 11927     | 7.52  | 10909     | 7.54  | 9311      | 7.15  |           |       |           |       |           |       |
| 25T734         | VTBD     | 2251 | 10 | 13807     | 9.85  | 12998     | 10.04 | 12069     | 10.06 | 10819     | 9.78  |           |       |           |       |
| 25T734         | VTBD     | 2577 | 15 | 16596     | 14.33 | 15965     | 14.69 | 15288     | 14.98 | 14539     | 15.11 | 13691     | 15.07 | 12608     | 14.77 |

## Size 29 VTBD Belt Driven Type T Vaneaxial

| CATALOG NUMBER |          |      |    | 0.250" SP |       | 0.500" SP |       | 0.750" SP |       | 1.000" SP |       | 1.250" SP |       | 1.500" SP |       |
|----------------|----------|------|----|-----------|-------|-----------|-------|-----------|-------|-----------|-------|-----------|-------|-----------|-------|
| PROP           | FAN TYPE | RPM  | HP | CFM       | BHP   | CFM       | BHP   | CFM       | BHP   | CFM       | BHP   | CFM       | BHP   | CFM       | BHP   |
| 29T734         | VTBD     | 816  | 1  | 8293      | 0.949 | 7023      | 1.01  |           |       |           |       |           |       |           |       |
| 29T734         | VTBD     | 934  | 1½ | 9798      | 1.39  | 8784      | 1.49  | 7461      | 1.50  |           |       |           |       |           |       |
| 29T734         | VTBD     | 1028 | 2  | 10972     | 1.83  | 10073     | 1.94  | 9051      | 2.01  | 7559      | 1.94  |           |       |           |       |
| 29T734         | VTBD     | 1177 | 3  | 12798     | 2.72  | 12025     | 2.84  | 11221     | 2.96  | 10295     | 3.02  | 9068      | 2.96  |           |       |
| 29T734         | VTBD     | 1395 | 5  | 15425     | 4.47  | 14786     | 4.61  | 14126     | 4.75  | 13450     | 4.90  | 12707     | 5.01  | 11866     | 5.03  |
| 29T734         | VTBD     | 1597 | 7½ | 17829     | 6.65  | 17277     | 6.81  | 16710     | 6.97  | 16132     | 7.14  | 15544     | 7.32  | 14921     | 7.47  |
| 29T734         | VTBD     | 1758 | 10 | 19731     | 8.83  | 19233     | 9.01  | 18724     | 9.19  | 18204     | 9.37  | 17678     | 9.56  | 17143     | 9.75  |
| 29T734         | VTBD     | 2012 | 15 | 22715     | 13.17 | 22283     | 13.38 | 21844     | 13.59 | 21397     | 13.79 | 20943     | 13.99 | 20484     | 14.20 |
| 29T734         | VTBD     | 2214 | 20 | 25077     | 17.51 | 24686     | 17.73 | 24290     | 17.96 | 23888     | 18.19 | 23481     | 18.41 | 23069     | 18.63 |
| CATALOG NUMBER |          |      |    | 2.000" SP |       | 2.500" SP |       | 3.000" SP |       | 3.500" SP |       | 4.000" SP |       | 4.500" SP |       |
| PROP           | FAN TYPE | RPM  | HP | CFM       | BHP   | CFM       | BHP   | CFM       | BHP   | CFM       | BHP   | CFM       | BHP   | CFM       | BHP   |
| 29T734         | VTBD     | 816  | 1  |           |       |           |       |           |       |           |       |           |       |           |       |
| 29T734         | VTBD     | 934  | 1½ |           |       |           |       |           |       |           |       |           |       |           |       |
| 29T734         | VTBD     | 1028 | 2  |           |       |           |       |           |       |           |       |           |       |           |       |
| 29T734         | VTBD     | 1177 | 3  |           |       |           |       |           |       |           |       |           |       |           |       |
| 29T734         | VTBD     | 1395 | 5  |           |       |           |       |           |       |           |       |           |       |           |       |
| 29T734         | VTBD     | 1597 | 7½ | 13473     | 7.55  |           |       |           |       |           |       |           |       |           |       |
| 29T734         | VTBD     | 1758 | 10 | 15977     | 10.04 | 14594     | 10.05 |           |       |           |       |           |       |           |       |
| 29T734         | VTBD     | 2012 | 15 | 19553     | 14.64 | 18546     | 15.00 | 17413     | 15.11 | 16009     | 14.95 |           |       |           |       |
| 29T734         | VTBD     | 2214 | 20 | 22234     | 19.10 | 21380     | 19.59 | 20462     | 19.97 | 19447     | 20.13 | 18290     | 20.06 | 16807     | 19.63 |

# Performance Data – Vaneaxial

## Size 33 VTBD Belt Driven Type T Vaneaxial

| CATALOG NUMBER |          |      |    | 0.250" SP |       | 0.500" SP |       | 0.750" SP |       | 1.000" SP |       | 1.250" SP |       | 1.500" SP |        |
|----------------|----------|------|----|-----------|-------|-----------|-------|-----------|-------|-----------|-------|-----------|-------|-----------|--------|
| PROP           | FAN TYPE | RPM  | HP | CFM       | BHP   | CFM       | BHP   | CFM       | BHP   | CFM       | BHP   | CFM       | BHP   | CFM       | BHP    |
| 33T734         | VTBD     | 829  | 2  | 12840     | 1.86  | 11545     | 1.98  | 9893      | 2.00  |           |       |           |       |           |        |
| 33T734         | VTBD     | 949  | 3  | 15035     | 2.74  | 13934     | 2.89  | 12733     | 3.01  | 11191     | 3.00  |           |       |           |        |
| 33T734         | VTBD     | 1125 | 5  | 18188     | 4.50  | 17277     | 4.66  | 16339     | 4.84  | 15333     | 5.00  | 14168     | 5.04  | 12617     | 4.92   |
| 33T734         | VTBD     | 1287 | 7½ | 21047     | 6.67  | 20262     | 6.86  | 19453     | 7.06  | 18630     | 7.26  | 17760     | 7.45  | 16787     | 7.54   |
| 33T734         | VTBD     | 1417 | 10 | 23322     | 8.86  | 22615     | 9.07  | 21889     | 9.28  | 21148     | 9.50  | 20397     | 9.73  | 19605     | 9.93   |
| 33T734         | VTBD     | 1622 | 15 | 26885     | 13.21 | 26272     | 13.45 | 25648     | 13.70 | 25011     | 13.94 | 24364     | 14.19 | 23713     | 14.45  |
| 33T734         | VTBD     | 1785 | 20 | 29703     | 17.55 | 29149     | 17.82 | 28586     | 18.09 | 28015     | 18.35 | 27433     | 18.62 | 26845     | 18.89  |
| 33T734         | VTBD     | 1923 | 25 | 32081     | 21.89 | 31569     | 22.18 | 31049     | 22.47 | 30523     | 22.76 | 29989     | 23.05 | 29447     | 23.34  |
| 33T734         | VTBD     | 2044 | 30 | 34162     | 26.25 | 33681     | 26.56 | 33194     | 26.87 | 32701     | 27.18 | 32203     | 27.48 | 31698     | 27.793 |
| CATALOG NUMBER |          |      |    | 2.000" SP |       | 2.500" SP |       | 3.000" SP |       | 3.500" SP |       | 4.000" SP |       | 4.500" SP |        |
| PROP           | FAN TYPE | RPM  | HP | CFM       | BHP   | CFM       | BHP   | CFM       | BHP   | CFM       | BHP   | CFM       | BHP   | CFM       | BHP    |
| 33T734         | VTBD     | 829  | 2  |           |       |           |       |           |       |           |       |           |       |           |        |
| 33T734         | VTBD     | 949  | 3  |           |       |           |       |           |       |           |       |           |       |           |        |
| 33T734         | VTBD     | 1125 | 5  |           |       |           |       |           |       |           |       |           |       |           |        |
| 33T734         | VTBD     | 1287 | 7½ | 14180     | 7.31  |           |       |           |       |           |       |           |       |           |        |
| 33T734         | VTBD     | 1417 | 10 | 17776     | 10.07 | 14973     | 9.58  |           |       |           |       |           |       |           |        |
| 33T734         | VTBD     | 1622 | 15 | 22341     | 14.92 | 20768     | 15.11 | 18764     | 14.89 |           |       |           |       |           |        |
| 33T734         | VTBD     | 1785 | 20 | 25654     | 19.47 | 24376     | 19.95 | 22939     | 20.13 | 21208     | 19.97 |           |       |           |        |
| 33T734         | VTBD     | 1923 | 25 | 28353     | 23.94 | 27229     | 24.55 | 26008     | 25.01 | 24661     | 25.17 | 23081     | 25.02 | 21009     | 24.31  |
| 33T734         | VTBD     | 2044 | 30 | 30672     | 28.41 | 29635     | 29.07 | 28554     | 29.69 | 27373     | 30.09 | 26090     | 30.23 | 24599     | 30.07  |

## Size 38 VTBD Belt Driven Type T Vaneaxial

| CATALOG NUMBER |          |      |    | 0.250" SP |       | 0.500" SP |       | 0.750" SP |       | 1.000" SP |       | 1.250" SP |       | 1.500" SP |       |
|----------------|----------|------|----|-----------|-------|-----------|-------|-----------|-------|-----------|-------|-----------|-------|-----------|-------|
| PROP           | FAN TYPE | RPM  | HP | CFM       | BHP   | CFM       | BHP   | CFM       | BHP   | CFM       | BHP   | CFM       | BHP   | CFM       | BHP   |
| 38T734         | VTBD     | 645  | 2  | 14889     | 1.89  | 13081     | 1.98  |           |       |           |       |           |       |           |       |
| 38T734         | VTBD     | 739  | 3  | 17515     | 2.79  | 16020     | 2.93  | 14323     | 3.01  |           |       |           |       |           |       |
| 38T734         | VTBD     | 876  | 5  | 21248     | 4.56  | 20026     | 4.77  | 18738     | 4.90  | 17306     | 4.99  | 15524     | 5.03  |           |       |
| 38T734         | VTBD     | 1003 | 7½ | 24649     | 6.76  | 23603     | 7.03  | 22513     | 7.23  | 21376     | 7.37  | 20131     | 7.47  | 18762     | 7.55  |
| 38T734         | VTBD     | 1104 | 10 | 27327     | 8.94  | 26388     | 9.25  | 25414     | 9.51  | 24411     | 9.71  | 23363     | 9.84  | 22225     | 9.96  |
| 38T734         | VTBD     | 1263 | 15 | 31512     | 13.27 | 30700     | 13.64 | 29867     | 13.97 | 29010     | 14.26 | 28135     | 14.49 | 27235     | 14.66 |
| 38T734         | VTBD     | 1390 | 20 | 34833     | 17.60 | 34101     | 18.02 | 33353     | 18.40 | 32588     | 18.75 | 31805     | 19.06 | 31009     | 19.30 |
| 38T734         | VTBD     | 1498 | 25 | 37648     | 21.95 | 36972     | 22.41 | 36283     | 22.84 | 35581     | 23.23 | 34865     | 23.59 | 34134     | 23.91 |
| CATALOG NUMBER |          |      |    | 2.000" SP |       | 2.500" SP |       | 3.000" SP |       | 3.500" SP |       | 4.000" SP |       | 4.500" SP |       |
| PROP           | FAN TYPE | RPM  | HP | CFM       | BHP   | CFM       | BHP   | CFM       | BHP   | CFM       | BHP   | CFM       | BHP   | CFM       | BHP   |
| 38T734         | VTBD     | 645  | 2  |           |       |           |       |           |       |           |       |           |       |           |       |
| 38T734         | VTBD     | 739  | 3  |           |       |           |       |           |       |           |       |           |       |           |       |
| 38T734         | VTBD     | 876  | 5  |           |       |           |       |           |       |           |       |           |       |           |       |
| 38T734         | VTBD     | 1003 | 7½ |           |       |           |       |           |       |           |       |           |       |           |       |
| 38T734         | VTBD     | 1104 | 10 | 19454     | 10.05 |           |       |           |       |           |       |           |       |           |       |
| 38T734         | VTBD     | 1263 | 15 | 25276     | 14.93 | 22992     | 15.09 |           |       |           |       |           |       |           |       |
| 38T734         | VTBD     | 1390 | 20 | 29351     | 19.65 | 27527     | 19.94 | 25446     | 20.11 |           |       |           |       |           |       |
| 38T734         | VTBD     | 1498 | 25 | 32641     | 24.38 | 31052     | 24.71 | 29327     | 25.01 | 27350     | 25.17 | 23999     | 24.62 |           |       |

# Performance Data – Vaneaxial

## Size 43 VTBD Belt Driven Type T Vaneaxial

| CATALOG NUMBER |          |      |    | 0.250" SP |       | 0.500" SP |       | 0.750" SP |       | 1.000" SP |       | 1.250" SP |       | 1.500" SP |       |
|----------------|----------|------|----|-----------|-------|-----------|-------|-----------|-------|-----------|-------|-----------|-------|-----------|-------|
| PROP           | FAN TYPE | RPM  | HP | CFM       | BHP   | CFM       | BHP   | CFM       | BHP   | CFM       | BHP   | CFM       | BHP   | CFM       | BHP   |
| 43T734         | VTBD     | 526  | 2  | 17242     | 1.93  | 14612     | 2.02  |           |       |           |       |           |       |           |       |
| 43T734         | VTBD     | 603  | 3  | 20411     | 2.85  | 18285     | 2.98  | 15614     | 3.04  |           |       |           |       |           |       |
| 43T734         | VTBD     | 714  | 5  | 24847     | 4.62  | 23128     | 4.85  | 21263     | 4.97  | 19084     | 5.06  |           |       |           |       |
| 43T734         | VTBD     | 818  | 7½ | 28917     | 6.85  | 27449     | 7.15  | 25913     | 7.36  | 24250     | 7.49  | 22400     | 7.59  | 19597     | 7.50  |
| 43T734         | VTBD     | 900  | 10 | 32088     | 9.05  | 30772     | 9.40  | 29401     | 9.67  | 27976     | 9.86  | 26425     | 9.99  | 24742     | 10.11 |
| 43T734         | VTBD     | 1030 | 15 | 37070     | 13.42 | 35937     | 13.85 | 34767     | 14.22 | 33562     | 14.52 | 32322     | 14.73 | 31010     | 14.90 |
| 43T734         | VTBD     | 1134 | 20 | 41028     | 17.80 | 40007     | 18.29 | 38959     | 18.73 | 37883     | 19.11 | 36783     | 19.42 | 35655     | 19.65 |
| 43T734         | VTBD     | 1222 | 25 | 44362     | 22.19 | 43420     | 22.73 | 42456     | 23.22 | 41471     | 23.66 | 40462     | 24.04 | 39437     | 24.35 |
| 43T734         | VTBD     | 1298 | 30 | 47233     | 26.52 | 46349     | 27.09 | 45448     | 27.63 | 44529     | 28.12 | 43590     | 28.56 | 42634     | 28.94 |
| 43T734         | VTBD     | 1429 | 40 | 52169     | 35.24 | 51370     | 35.89 | 50558     | 36.50 | 49733     | 37.07 | 48895     | 37.60 | 48041     | 38.08 |
| CATALOG NUMBER |          |      |    | 2.000" SP |       | 2.500" SP |       | 3.000" SP |       | 3.500" SP |       | 4.000" SP |       | 4.500" SP |       |
| PROP           | FAN TYPE | RPM  | HP | CFM       | BHP   | CFM       | BHP   | CFM       | BHP   | CFM       | BHP   | CFM       | BHP   | CFM       | BHP   |
| 43T734         | VTBD     | 526  | 2  |           |       |           |       |           |       |           |       |           |       |           |       |
| 43T734         | VTBD     | 603  | 3  |           |       |           |       |           |       |           |       |           |       |           |       |
| 43T734         | VTBD     | 714  | 5  |           |       |           |       |           |       |           |       |           |       |           |       |
| 43T734         | VTBD     | 818  | 7½ |           |       |           |       |           |       |           |       |           |       |           |       |
| 43T734         | VTBD     | 900  | 10 |           |       |           |       |           |       |           |       |           |       |           |       |
| 43T734         | VTBD     | 1030 | 15 | 28087     | 15.16 |           |       |           |       |           |       |           |       |           |       |
| 43T734         | VTBD     | 1134 | 20 | 33215     | 20.00 | 30456     | 20.26 |           |       |           |       |           |       |           |       |
| 43T734         | VTBD     | 1222 | 25 | 37296     | 24.79 | 34940     | 25.15 | 32211     | 25.35 |           |       |           |       |           |       |
| 43T734         | VTBD     | 1298 | 30 | 40672     | 29.50 | 38560     | 29.90 | 36274     | 30.26 | 33432     | 30.34 |           |       |           |       |
| 43T734         | VTBD     | 1429 | 40 | 46298     | 38.87 | 44497     | 39.43 | 42573     | 39.87 | 40518     | 40.28 | 38224     | 40.54 | 34948     | 40.19 |

## Size 48 VTBD Belt Driven Type T Vaneaxial

| CATALOG NUMBER |          |      |    | 0.250" SP |       | 0.500" SP |       | 0.750" SP |       | 1.000" SP |       | 1.250" SP |       | 1.500" SP |       |
|----------------|----------|------|----|-----------|-------|-----------|-------|-----------|-------|-----------|-------|-----------|-------|-----------|-------|
| PROP           | FAN TYPE | RPM  | HP | CFM       | BHP   | CFM       | BHP   | CFM       | BHP   | CFM       | BHP   | CFM       | BHP   | CFM       | BHP   |
| 48T734         | VTBD     | 503  | 3  | 23320     | 2.89  | 20368     | 3.03  |           |       |           |       |           |       |           |       |
| 48T734         | VTBD     | 596  | 5  | 28555     | 4.70  | 26224     | 4.93  | 23603     | 5.06  | 19634     | 5.02  |           |       |           |       |
| 48T734         | VTBD     | 682  | 7½ | 33278     | 6.93  | 31289     | 7.26  | 29186     | 7.45  | 26832     | 7.59  | 23696     | 7.60  |           |       |
| 48T734         | VTBD     | 751  | 10 | 37015     | 9.17  | 35237     | 9.56  | 33379     | 9.84  | 31397     | 10.01 | 29206     | 10.16 | 26333     | 10.16 |
| 48T734         | VTBD     | 859  | 15 | 42803     | 13.56 | 41276     | 14.05 | 39689     | 14.45 | 38055     | 14.74 | 36334     | 14.94 | 34465     | 15.12 |
| 48T734         | VTBD     | 946  | 20 | 47428     | 17.99 | 46054     | 18.55 | 44637     | 19.03 | 43178     | 19.43 | 41683     | 19.72 | 40118     | 19.94 |
| 48T734         | VTBD     | 1019 | 25 | 51289     | 22.39 | 50021     | 23.00 | 48720     | 23.54 | 47383     | 24.02 | 46017     | 24.41 | 44618     | 24.70 |
| 48T734         | VTBD     | 1083 | 30 | 54663     | 26.79 | 53474     | 27.45 | 52260     | 28.05 | 51016     | 28.58 | 49743     | 29.05 | 48449     | 29.42 |
| 48T734         | VTBD     | 1192 | 40 | 60389     | 35.56 | 59316     | 36.30 | 58223     | 36.99 | 57109     | 37.62 | 55973     | 38.20 | 54815     | 38.71 |
| 48T734         | VTBD     | 1284 | 50 | 65209     | 44.31 | 64216     | 45.12 | 63208     | 45.88 | 62183     | 46.59 | 61141     | 47.25 | 60082     | 47.86 |
| 48T734         | VTBD     | 1364 | 60 | 69390     | 53.00 | 68458     | 53.87 | 67514     | 54.69 | 66555     | 55.47 | 65583     | 56.20 | 64596     | 56.88 |
| CATALOG NUMBER |          |      |    | 2.000" SP |       | 2.500" SP |       | 3.000" SP |       | 3.500" SP |       | 4.000" SP |       | 4.500" SP |       |
| PROP           | FAN TYPE | RPM  | HP | CFM       | BHP   | CFM       | BHP   | CFM       | BHP   | CFM       | BHP   | CFM       | BHP   | CFM       | BHP   |
| 48T734         | VTBD     | 503  | 3  |           |       |           |       |           |       |           |       |           |       |           |       |
| 48T734         | VTBD     | 596  | 5  |           |       |           |       |           |       |           |       |           |       |           |       |
| 48T734         | VTBD     | 682  | 7½ |           |       |           |       |           |       |           |       |           |       |           |       |
| 48T734         | VTBD     | 751  | 10 |           |       |           |       |           |       |           |       |           |       |           |       |
| 48T734         | VTBD     | 859  | 15 | 29611     | 15.17 |           |       |           |       |           |       |           |       |           |       |
| 48T734         | VTBD     | 946  | 20 | 36667     | 20.31 | 31523     | 20.12 |           |       |           |       |           |       |           |       |
| 48T734         | VTBD     | 1019 | 25 | 41594     | 25.14 | 38189     | 25.47 |           |       |           |       |           |       |           |       |
| 48T734         | VTBD     | 1083 | 30 | 45735     | 29.95 | 42744     | 30.39 | 39145     | 30.57 |           |       |           |       |           |       |
| 48T734         | VTBD     | 1192 | 40 | 52448     | 39.47 | 49935     | 40.01 | 47206     | 40.50 | 44126     | 40.79 | 39267     | 40.13 |           |       |
| 48T734         | VTBD     | 1284 | 50 | 57917     | 48.86 | 55683     | 49.56 | 53299     | 50.12 | 50750     | 50.63 | 47928     | 50.97 | 43956     | 50.59 |
| 48T734         | VTBD     | 1364 | 60 | 62579     | 58.07 | 60516     | 58.97 | 58372     | 59.64 | 56075     | 60.21 | 53664     | 60.75 | 50997     | 61.10 |



# Performance Data – Vaneaxial

## Size 54 VTBD Belt Driven Type T Vaneaxial

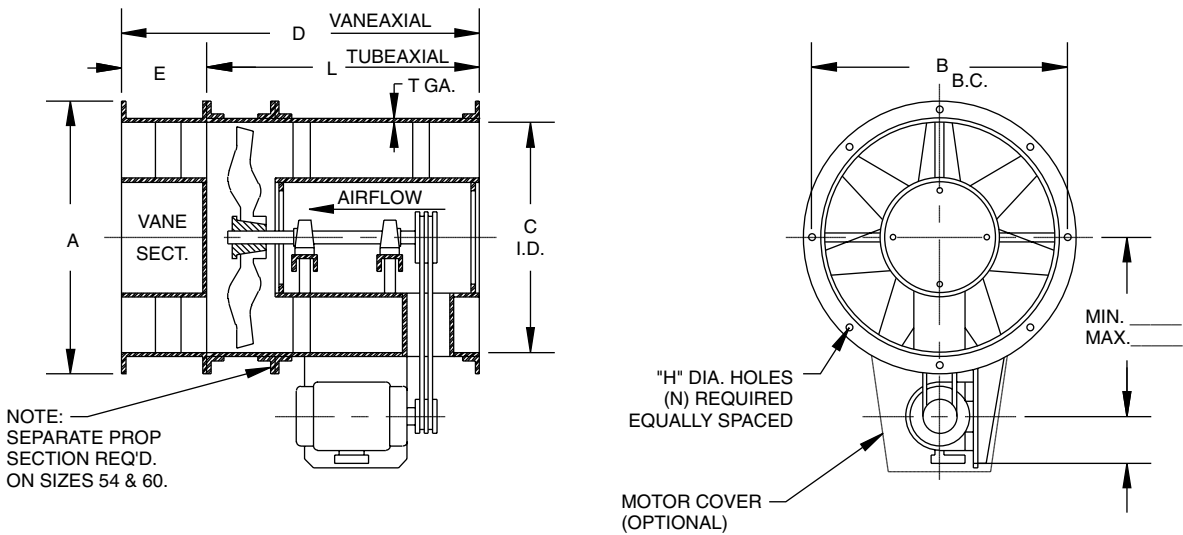
| CATALOG NUMBER |          |     |    | 0.250" SP |       | 0.500" SP |       | 0.750" SP |       | 1.000" SP |       | 1.250" SP |       | 1.500" SP |       | 2.000" SP |       | 2.500" SP |       | 3.000" SP |       |
|----------------|----------|-----|----|-----------|-------|-----------|-------|-----------|-------|-----------|-------|-----------|-------|-----------|-------|-----------|-------|-----------|-------|-----------|-------|
| PROP           | FAN TYPE | RPM | HP | CFM       | BHP   | CFM       | BHP   | CFM       | BHP   | CFM       | BHP   | CFM       | BHP   | CFM       | BHP   | CFM       | BHP   | CFM       | BHP   | CFM       | BHP   |
| 54T734         | VTBD     | 412 | 3  | 26623     | 2.90  | 22346     | 3.03  |           |       |           |       |           |       |           |       |           |       |           |       |           |       |
| 54T734         | VTBD     | 488 | 5  | 32818     | 4.70  | 29540     | 4.93  | 25570     | 5.04  |           |       |           |       |           |       |           |       |           |       |           |       |
| 54T734         | VTBD     | 559 | 7½ | 38437     | 6.95  | 35672     | 7.29  | 32642     | 7.47  | 28997     | 7.58  |           |       |           |       |           |       |           |       |           |       |
| 54T734         | VTBD     | 615 | 10 | 42797     | 9.15  | 40322     | 9.57  | 37713     | 9.83  | 34808     | 10.02 | 31163     | 10.07 |           |       |           |       |           |       |           |       |
| 54T734         | VTBD     | 704 | 15 | 49638     | 13.54 | 47520     | 14.08 | 45312     | 14.50 | 43006     | 14.77 | 40480     | 14.98 | 37695     | 15.13 |           |       |           |       |           |       |
| 54T734         | VTBD     | 775 | 20 | 55041     | 17.93 | 53139     | 18.55 | 51167     | 19.08 | 49135     | 19.46 | 47010     | 19.74 | 44704     | 19.97 | 39038     | 20.14 |           |       |           |       |
| 54T734         | VTBD     | 835 | 25 | 59581     | 22.31 | 57828     | 23.00 | 56021     | 23.60 | 54159     | 24.10 | 52250     | 24.46 | 50246     | 24.73 | 45816     | 25.19 | 38722     | 24.78 |           |       |
| 54T734         | VTBD     | 887 | 30 | 63500     | 26.64 | 61858     | 27.39 | 60172     | 28.06 | 58438     | 28.64 | 56666     | 29.09 | 54843     | 29.43 | 50873     | 29.97 | 46222     | 30.28 |           |       |
| 54T734         | VTBD     | 977 | 40 | 70256     | 35.41 | 68776     | 36.26 | 67263     | 37.04 | 65716     | 37.74 | 64132     | 38.35 | 62523     | 38.85 | 59168     | 39.56 | 55478     | 40.13 | 51254     | 40.47 |

## Size 60 VTBD Belt Driven Type T Vaneaxial

| CATALOG NUMBER |          |     |    | 0.250" SP |       | 0.500" SP |       | 0.750" SP |       | 1.000" SP |       | 1.250" SP |       | 1.500" SP |       | 2.000" SP |       | 2.500" SP |       | 3.000" SP |       |
|----------------|----------|-----|----|-----------|-------|-----------|-------|-----------|-------|-----------|-------|-----------|-------|-----------|-------|-----------|-------|-----------|-------|-----------|-------|
| PROP           | FAN TYPE | RPM | HP | CFM       | BHP   | CFM       | BHP   | CFM       | BHP   | CFM       | BHP   | CFM       | BHP   | CFM       | BHP   | CFM       | BHP   | CFM       | BHP   | CFM       | BHP   |
| 60T734         | VTBD     | 413 | 5  | 37620     | 4.87  | 33189     | 5.10  | 26589     | 5.09  |           |       |           |       |           |       |           |       |           |       |           |       |
| 60T734         | VTBD     | 473 | 7½ | 44205     | 7.18  | 40527     | 7.53  | 36375     | 7.73  | 29257     | 7.55  |           |       |           |       |           |       |           |       |           |       |
| 60T734         | VTBD     | 520 | 10 | 49266     | 9.43  | 45981     | 9.89  | 42446     | 10.14 | 38386     | 10.32 |           |       |           |       |           |       |           |       |           |       |
| 60T734         | VTBD     | 596 | 15 | 57331     | 14.00 | 54527     | 14.60 | 51595     | 15.02 | 48454     | 15.29 | 44977     | 15.51 | 40237     | 15.47 |           |       |           |       |           |       |
| 60T734         | VTBD     | 656 | 20 | 63626     | 18.50 | 61111     | 19.21 | 58494     | 19.77 | 55783     | 20.15 | 52859     | 20.42 | 49697     | 20.67 |           |       |           |       |           |       |
| 60T734         | VTBD     | 706 | 25 | 68837     | 22.93 | 66519     | 23.72 | 64119     | 24.38 | 61646     | 24.88 | 59072     | 25.23 | 56286     | 25.52 | 49696     | 25.84 |           |       |           |       |
| 60T734         | VTBD     | 750 | 30 | 73402     | 27.38 | 71233     | 28.23 | 68997     | 28.97 | 66692     | 29.58 | 64330     | 30.02 | 61847     | 30.36 | 56354     | 30.92 | 47287     | 30.32 |           |       |
| 60T734         | VTBD     | 826 | 40 | 81252     | 36.36 | 79298     | 37.33 | 77295     | 38.20 | 75239     | 38.97 | 73137     | 39.6  | 70990     | 40.08 | 66378     | 40.80 | 61242     | 41.36 | 53178     | 40.75 |



# Dimensional Data



NOTE: FLANGED HOUSING CONSTRUCTION IS STANDARD ON STEEL FANS SIZES 15" THROUGH 33", ANGLE RING CONSTRUCTION IS STANDARD ON STEEL FANS SIZES 12" AND 38" THROUGH 60", AND ON ALL SIZES OF ALUMINUM CONSTRUCTION.

| SIZE | DIMENSIONS                       |                                  |                                 |                                |                                |                              |    |    |     |
|------|----------------------------------|----------------------------------|---------------------------------|--------------------------------|--------------------------------|------------------------------|----|----|-----|
|      | A                                | B                                | C                               | D                              | E                              | H                            | L  | N  | T   |
| 12   | 14 <sup>3</sup> / <sub>4</sub>   | 13 <sup>5</sup> / <sub>8</sub>   | 12                              | 26                             | 6                              | <sup>3</sup> / <sub>8</sub>  | 20 | 8  | 10  |
| 15   | 17 <sup>3</sup> / <sub>4</sub>   | 16 <sup>5</sup> / <sub>8</sub>   | 15                              | 26                             | 6                              | <sup>3</sup> / <sub>8</sub>  | 20 | 8  | 10  |
| 18   | 21 <sup>7</sup> / <sub>16</sub>  | 20                               | 18 <sup>3</sup> / <sub>16</sub> | 30                             | 6                              | <sup>7</sup> / <sub>16</sub> | 24 | 8  | 10  |
| 22   | 25 <sup>7</sup> / <sub>16</sub>  | 24                               | 22 <sup>3</sup> / <sub>16</sub> | 32                             | 8                              | <sup>7</sup> / <sub>16</sub> | 24 | 8  | 10  |
| 25   | 28 <sup>9</sup> / <sub>16</sub>  | 27 <sup>1</sup> / <sub>8</sub>   | 25 <sup>5</sup> / <sub>16</sub> | 42 <sup>1</sup> / <sub>2</sub> | 10 <sup>1</sup> / <sub>2</sub> | <sup>7</sup> / <sub>16</sub> | 32 | 8  | 10  |
| 29   | 32 <sup>9</sup> / <sub>16</sub>  | 31 <sup>3</sup> / <sub>16</sub>  | 29 <sup>3</sup> / <sub>16</sub> | 47                             | 11                             | <sup>7</sup> / <sub>16</sub> | 36 | 16 | 7   |
| 33   | 37 <sup>11</sup> / <sub>16</sub> | 35 <sup>1</sup> / <sub>4</sub>   | 33 <sup>5</sup> / <sub>16</sub> | 51                             | 15                             | <sup>7</sup> / <sub>16</sub> | 36 | 16 | 7   |
| 38   | 42 <sup>11</sup> / <sub>16</sub> | 40 <sup>1</sup> / <sub>4</sub>   | 38 <sup>5</sup> / <sub>16</sub> | 57                             | 15                             | <sup>7</sup> / <sub>16</sub> | 42 | 16 | 7   |
| 43   | 47 <sup>3</sup> / <sub>4</sub>   | 45 <sup>5</sup> / <sub>16</sub>  | 43 <sup>3</sup> / <sub>8</sub>  | 61                             | 19                             | <sup>7</sup> / <sub>16</sub> | 42 | 16 | 7   |
| 48   | 52 <sup>15</sup> / <sub>16</sub> | 50 <sup>13</sup> / <sub>16</sub> | 48 <sup>9</sup> / <sub>16</sub> | 67                             | 19                             | <sup>7</sup> / <sub>16</sub> | 48 | 16 | 7   |
| 54   | 59                               | 56 <sup>13</sup> / <sub>16</sub> | 54 <sup>1</sup> / <sub>2</sub>  | 84                             | 24                             | <sup>7</sup> / <sub>16</sub> | 60 | 24 | 1/4 |
| 60   | 65                               | 62 <sup>13</sup> / <sub>16</sub> | 60 <sup>1</sup> / <sub>2</sub>  | 84                             | 24                             | <sup>7</sup> / <sub>16</sub> | 60 | 24 | 1/4 |







©2004 Aerovent, Twin City Fan Companies, Ltd. All rights reserved throughout the world.

"Bulletin illustrations cover the general appearance of Aerovent products at the time of publication and we reserve the right to make changes in design and construction at any time."

---

**PROPELLER FANS | TUBEAXIAL & VANEAXIAL FANS | CENTRIFUGAL FANS & BLOWERS | ROOF VENTILATORS  
INDUSTRIAL AIR HANDLERS | AIR MAKE-UP | FIBERGLASS FANS | CUSTOM FANS**



**AEROVENT**  
A Twin City Fan Company

**Aerovent®**

**[WWW.AEROVENT.COM](http://WWW.AEROVENT.COM)**

---

**5959 Trenton Lane N | Minneapolis, MN 55442 | Phone: 763-551-7500 | Fax: 763-551-7501**