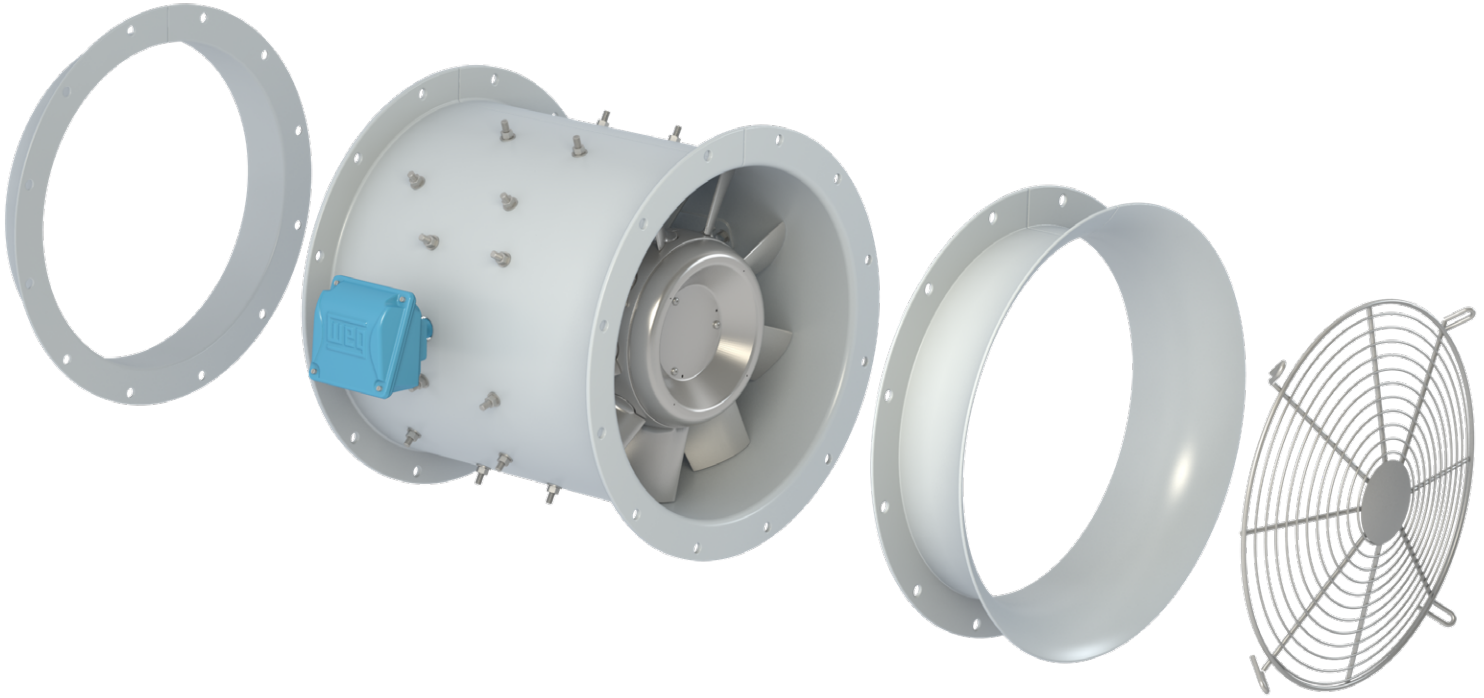


STOCKING PROGRAM



Fan Diameter (in)	Performance Range			Motor Description	
	CFM		SP		
	MIN	MAX	MAX	HP	Speed
12	500	2700	2	1	3600
	1800	2650	2	1	3600
16	1000	5700	3	3	3600
	3600	6100	3	3	3600
18	4000	5500	1	1	1800
	5300	8800	4.9	5	3600
24	8600	13500	2.8	5	1800

MARINE DUTY AXIAL FANS

- Vaneaxial & tubeaxial
- 1/4" thick housing
- Marine grade coating system
- Marine grade aluminum impeller
- Zn/Al corrosion resistant hardware
- Marine grade conduit box (die cast aluminum)
- Leads are extended behind the motor frame to prevent corrosion in the leads

OPTIONAL ACCESSORIES INCLUDE:

- Stock inlet bell
- Inlet guard
- Companion glange (all painted steel)



 **Fans Ship Within 5 Days**