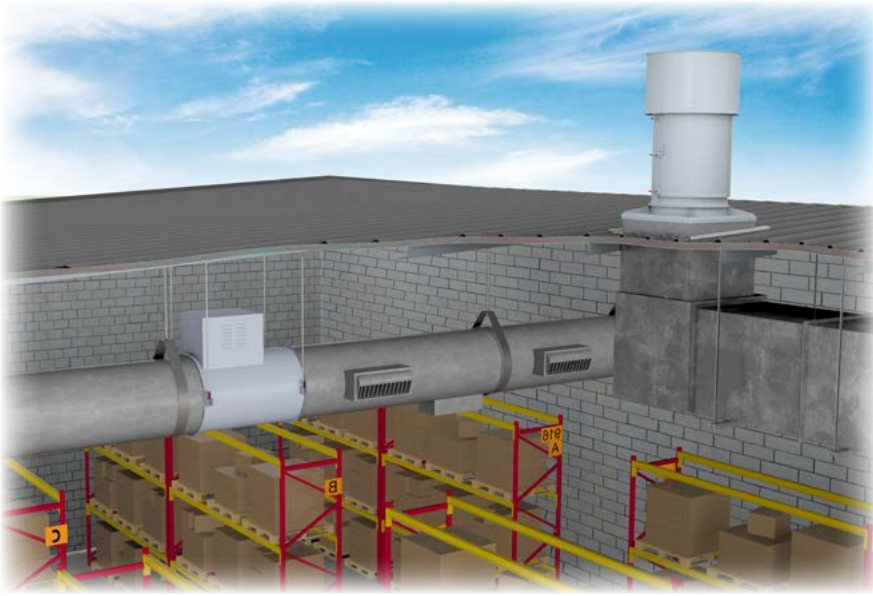


EASY ACCESS FANS

Swingout & Clamshell Construction

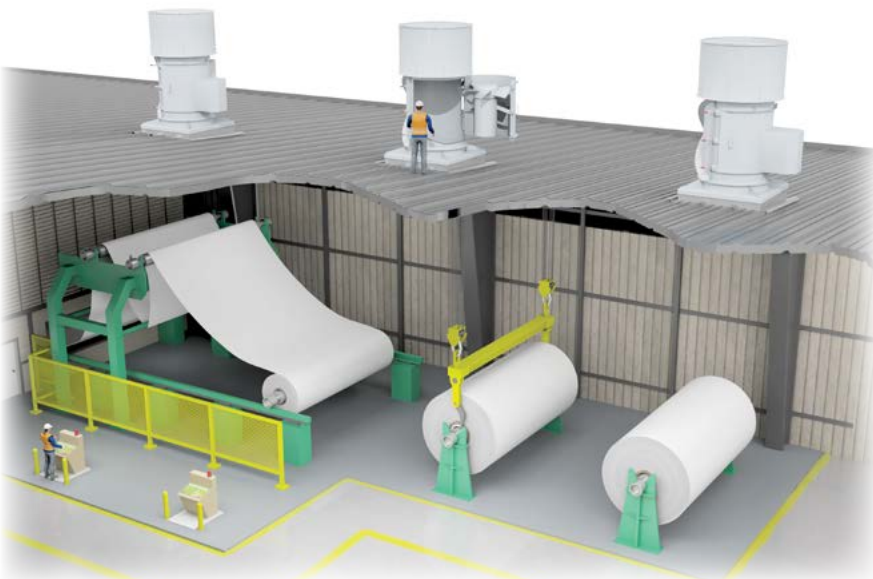




Warehouse Exhaust with Swingout

Common Applications

- Paint Finishing Systems
- Pulp & Paper Production
- Heat Recovery Steam Generators
- Potash Production
- Slurry Prep Facilities
- Steel & Aluminum Foundries



Paper Mill with Axial Swingouts

Swingout Fans

Swingout fans by Aerovent are the best choice when frequent cleaning, without removal of ductwork, is necessary. Swingout construction is also ideal for systems when short down times are essential. The design provides full access to the impeller and inner casing. The entire impeller/shaft/bearing assembly is mounted on a large swingout door providing easy access to all components outside of the airstream. Aerovent swingout fans can handle the toughest exhaust applications and are available in axial, tubular centrifugal, mixed flow and scroll type centrifugal fans. Swingout construction is available for vertical mounting only.

Swingout Configurations

Centrifugal: Arrangements 4S, 9ST and 9SS
 Axial and Inline Centrifugal: Arrangements 4 and 9

Clamshell Fans

Clamshell fans by Aerovent offer many of the advantages of swingout fans at a reduced cost. Doors swing open to provide accessibility to the internal components of the fan for cleaning without removal of ductwork. It is essential to follow safety precautions during cleaning. Heavy-duty hinges, positive locking latches and full gasketing provide a complete seal when doors are closed. An access door provides access to the bearings. Clamshell construction is available for inline centrifugal and axial fans and is used in vertical mount applications, due to the weight of the doors. If bearing, shaft or impeller replacement is required, the fan should be removed from the ductwork or roof to facilitate safe replacement of parts. If replacement of these parts while ducted or on the roof is required, it is recommended to use swingout construction.

Clamshell Configurations

Axial and Inline Centrifugal: Arrangements 4 and 9

Benefits of Easy Access Fans

- Reduced Down Time
- Easy Maintenance
- Fast Cleaning
- Quick Inspection
- Less Labor
- Accelerated Repairs

Swingout construction is available for vertical airflow fans only. Tubeaxial, vaneaxial and adjustable pitch vaneaxial swingout fans are available in sizes 24 through 60. Refer to Catalogs 414 and 157 for Tubeaxial Fans, Catalog 446 for Vaneaxial Fans and Catalog 476 for Adjustable Pitch Vaneaxial Fans. Mixed Flow Fans are available in sizes 222 through 445. Refer to Catalog 330 for Model AMX Mixed Flow Fans.

Axial Models Available with Swingout Construction

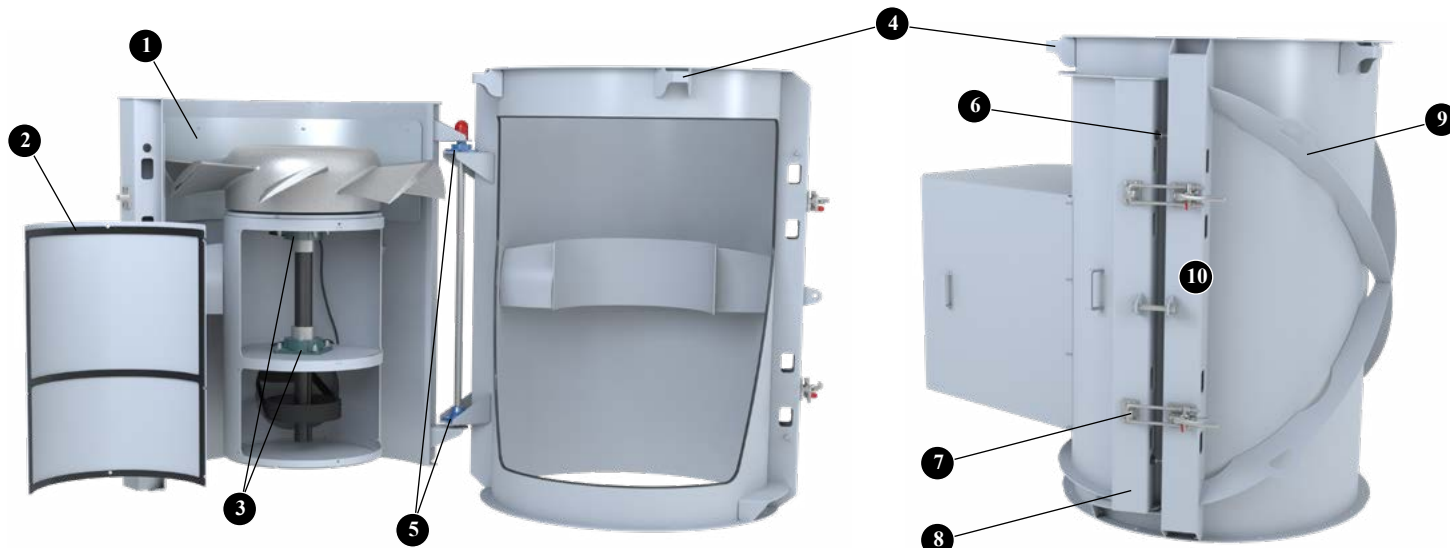
- AMX
- ATA
- CBD / CDD
- PTABD / PTA
- TABD / TA
- TSBD
- VJBD / VJ
- VPBD / VP
- VSBD
- VWBD / VW



Model VPBD Swingout

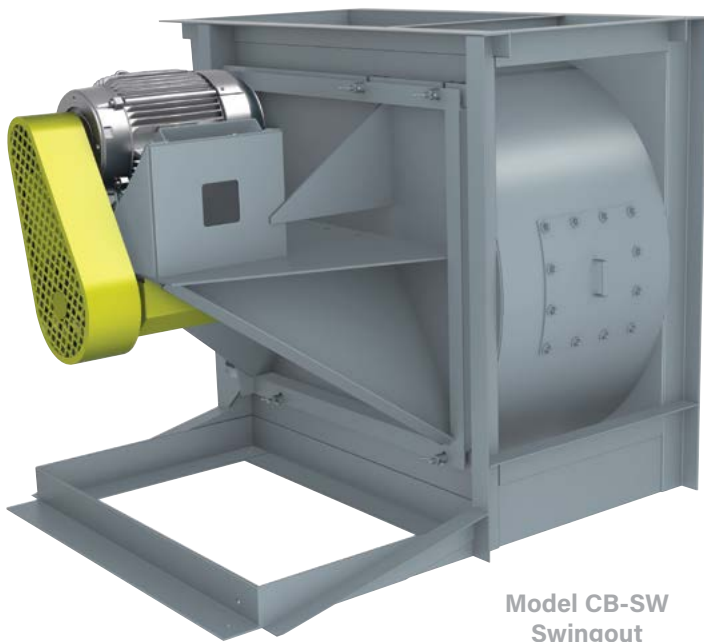


Construction Features



- 1 Impeller track liner gains 2% efficiency.
- 2 Bearing cylinder sealed with die-cut EPDM gaskets.
- 3 Flange bearings absorb shaft expansion for alignment.
- 4 Bi-directional lifting lugs with spacious jaw for ease of rigging.
- 5 Stainless steel door bearings with water ingress caps.
- 6 Swiveling door-stops prevent gasket crush.
- 7 7,500 lb. holding capacity clamps with 44:1 force multiplier for ergonomic, secure closure.
- 8 Support stanchions drive out structural vibration.
- 9 Scalloped x-bracing reduces fan weight by 10%.
- 10 Lock-out hasp for security and safety.

Backward inclined and airfoil centrifugal fans are available with swingouts in sizes 182 through 660 in Class I, II and III construction. The inlet funnel is removable without disturbing the ductwork. Refer to Catalog 720 for SWSI CB/CBA Backward Inclined Airfoil Centrifugal Fans.

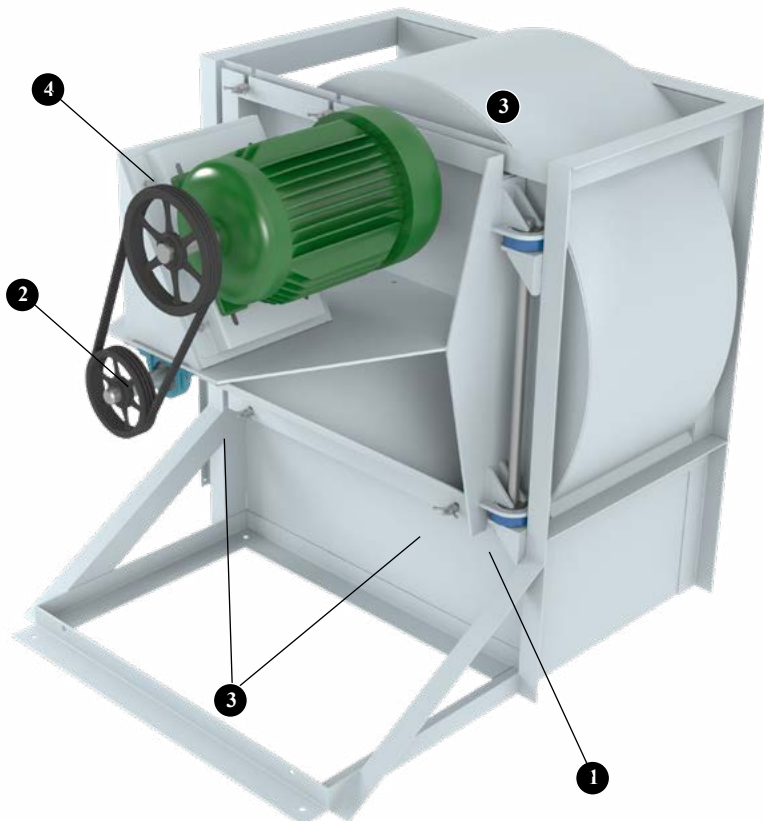


Model CB-SW
Swingout

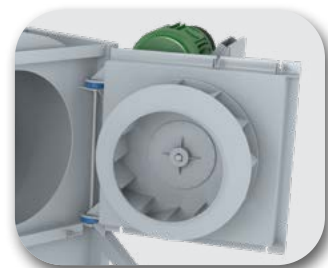
Centrifugal Models Available with Swingout Construction

- CAE-SW
- CB-SW
- CBA-SW

Construction Features



- 1 Heavy-duty flanged ball bearing hinge system provides door support without the need for a track.
- 2 200,000 hour L-50 average life bearings are standard.
- 3 Housing is continuously-welded, heavy-gauge construction.
- 4 Motor slide base standard on scroll swingout fans.
- 5 Extra heavy T-handles to lock doors for a tight seal.
- 6 Centrifugal Arrangement 9ST is available with a RH (shown) or LH door.
- 7 The swingout impeller design, available as an optional construction, allows for the impeller to pivot out of the fan housing for simple cleaning and maintenance. A rod prop is standard with the swingout impeller option to keep the assembly open as well as a lockable hasp.





Model CBD with
Single Door Clamshell

Models Available with Clamshell Construction

- AMX
- ATA
- CDD / CBD
- PTABD / PTA
- TSBD
- VJBD / VJ
- VPBD / VP
- VSBD
- VWBD / VW

Axial, Inline Centrifugal and Mixed Flow Fans

Clamshell construction is available for vertical airflow fans only. Tubeaxial, vaneaxial and adjustable pitch vaneaxial clamshell fans are available in sizes 21 through 60. Refer to Catalog 414 for Tubeaxial Fans, Catalog 446 for Vaneaxial Fans and Catalog 476 for Adjustable Pitch Vaneaxial Fans.

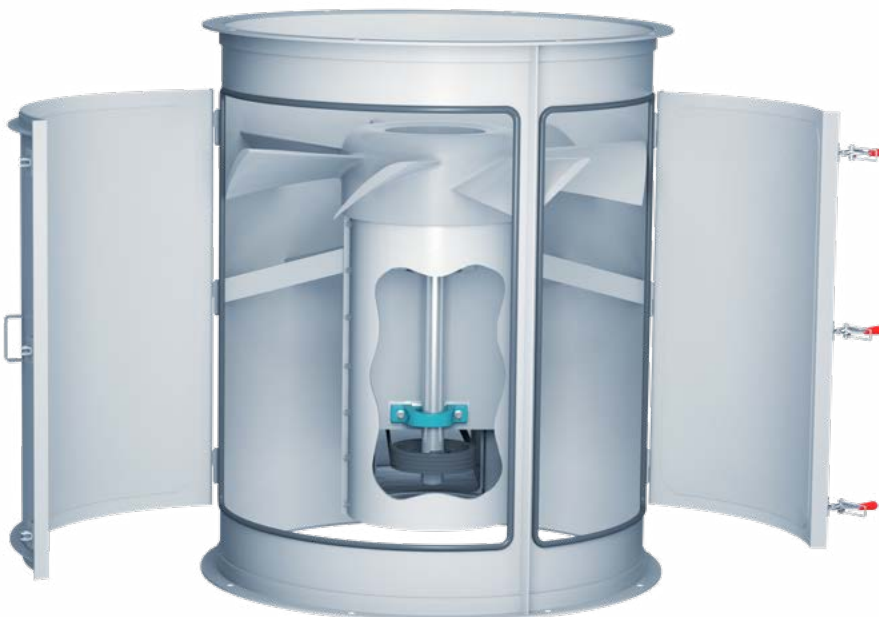
Model AMX Mixed Flow Fan combines the benefits of axial flow and centrifugal flow fans. Available on sizes 122 through 270 (single door) and sizes 300 through 445 (double door). Refer to Catalog 330 for Model AMX Mixed Flow Fans.

Model CBD Centaxial® Tubular Centrifugal fans combines the advantages of the axial flow fan with performance and application characteristics similar to a centrifugal fan. Available on sizes 12 through 25 (single door) and sizes 28 through 39 (double door). Refer to Catalog 337 for Models CBD/CDD Tubular Centrifugal Fans.

Construction Features

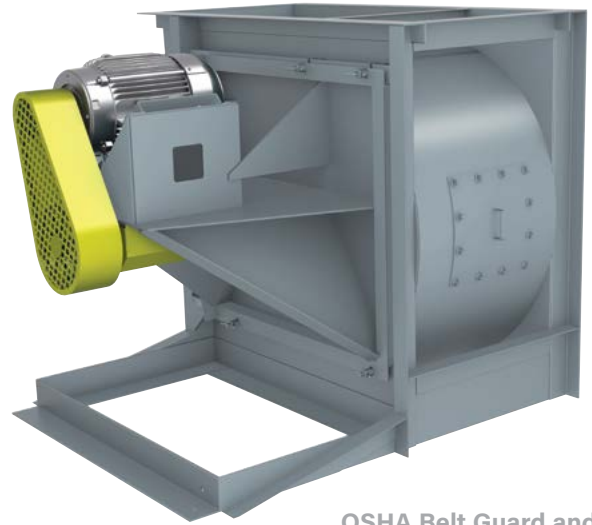
- Heavy-duty flanged ball bearing hinge system provides door support without the need for a track.
- 200,000 hour L-50 average life bearings are standard.
- Housing is continuously-welded, heavy-gauge construction.
- Extra heavy door latches.

AEROVENT 
INDUSTRIAL VENTILATION SYSTEMS



Model PTABD with
Double Door
Clamshell Construction

- 1 Steel, aluminum and stainless steel construction available.
- 2 FRP plastic inlet funnels available when aluminum is not suitable for spark resistant construction.
- 3 Special coatings are available for corrosion resistance.
- 4 Quick open and bolted access doors allow for easy inspection. The quick open access door is specifically designed for fans that require frequent inspection.
- 5 OSHA belt guards are available for all swingout and clamshell fans.
- 6 Optional pivot motor base for constant belt tension available on scroll swingout fans.
- 7 Full access doors are used for applications that require occasional access. After the full access door is removed, the internal components of the fan can be accessed through a bolted inspection port on the interior of the fan.



OSHA Belt Guard and Bolted on Access Door on Model CB-SW Swingout

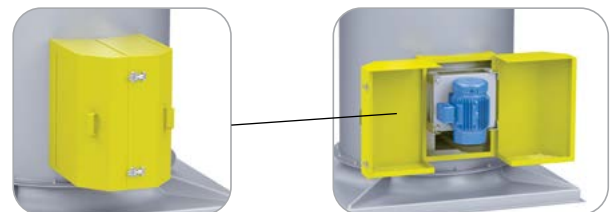
Full Access Door and Inspection Port



Centrifugal Swingout Arrangement 9SS



Pivot Motor Base for Arrg. 9SS

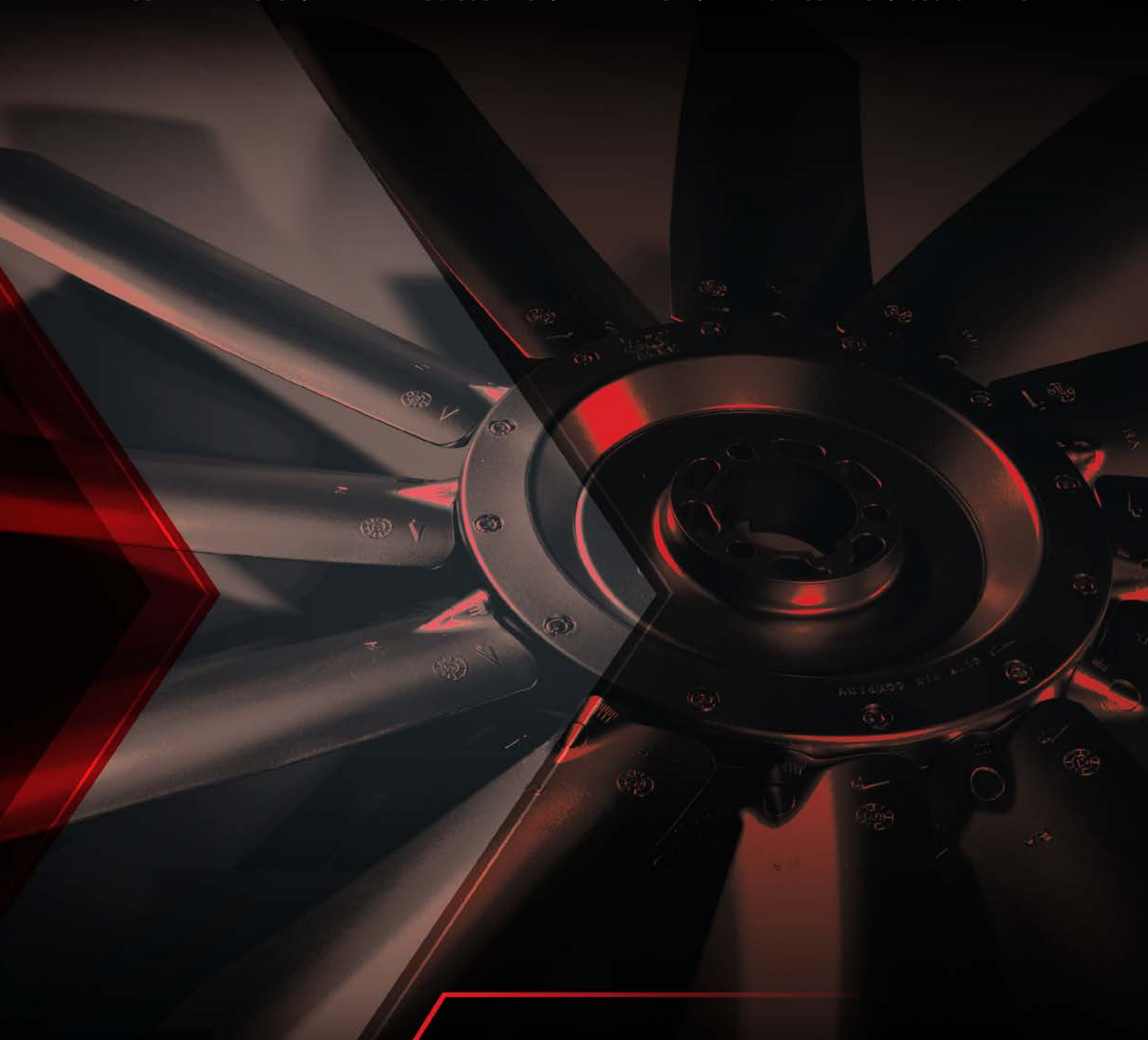


Clamshell Motor Covers Provide Direct Access to a Fan's Motor Without Having to Remove the Motor Cover



Roof Ventilators with Swingouts

WALL MOUNTED FANS | TUBEAXIAL & VANEAXIAL FANS | CENTRIFUGAL FANS & BLOWERS
ROOF VENTILATORS | AIR HEATERS & COOLERS | AIR MAKE-UP | FIBERGLASS FANS | CUSTOM FANS



AEROVENT 
INDUSTRIAL VENTILATION SYSTEMS

AEROVENT.COM

5959 Trenton Lane N. | Minneapolis, MN 55442 | Phone: 763-551-7500 | Fax: 763-551-7501

©2012-2026 Aerovent, Minneapolis, MN. All rights reserved. Catalog illustrations cover the general appearance of Aerovent products at the time of publication and we reserve the right to make changes in design and construction at any time without notice.